

3.0 AGRICULTURAL, NATURAL AND CULTURAL RESOURCES

Wisconsin State Statute 66.1001(2)(e)

(e) Agricultural, Natural and Cultural Resources.

A compilation of objectives, policies, goals, maps and programs for the conservation, and promotion of the effective management, of natural resources such as groundwater, forests, productive agricultural areas, environmentally sensitive areas, threatened and endangered species, stream corridors, surface water, floodplains, wetlands, wildlife habitat, metallic and nonmetallic mineral resources, parks, open spaces, historical and cultural resources, community design, recreational resources and other natural resources.

3.1 AGRICULTURAL RESOURCES

3.1.1 AGRICULTURAL RESOURCES SUMMARY

The purpose of the Agricultural element is to present agricultural data and provide direction for land use decisions impacting agriculture for the next 20 years. Agriculture is part of the history and roots of the City, not to mention that as it is a basic building block of the Grant County economy, farming is both culturally and economically significant to Lancaster. Farming is also an aesthetically important tenet of life in Lancaster, providing, as it were, a setting for the City.

3.1.2 GOALS

The following is the Agricultural Resource Goal, one of the fourteen Smart Growth Planning Goals required by the planning grant contract.

1. Protect economically productive areas, including farmland and forests.

3.1.3 OBJECTIVES AND POLICY AND PROGRAM RECOMMENDATIONS

The following agricultural resource objectives and policy recommendations (not in order of priority) support the above goal. They will guide agricultural resource decisions in the City of Lancaster over the next 20 years.

NOT IN ORDER OF PRIORITY

1. **Emphasize the preservation of the environmental quality and rural character of the jurisdiction when considering future land use proposals.**
2. **Preclude premature development to preserve agricultural fields in the community from encroachment by incompatible development.**
3. **Encourage proper separation distances between urban and rural land uses to avoid conflicts to the extent possible.**

3.1.4 FARMING SYSTEM

Using farm related data gathered at the County level from the Agricultural Census, it is possible to draw an inference about the state of agricultural health in the City of Lancaster. (The Agricultural Census does not collect data at the City level and defines a farm as any place from which \$1,000 or more of agricultural products were produced and sold, or normally would have been sold, during the year.)

Table 3.1.1 Trends in Farm Numbers 1987 – 2002

Grant County	1987	1992	1997	2002
Farms (number)	2,470	2,340	2,238	2,490
Land in farms (acres)	648,318	620,951	599,617	605,836
Average size of farm (acres)	262	265	268	243
Number of farms by size – 1 to 9 acres	136	115	73	105
Number of farms by size – 10 to 49 acres	178	204	234	398
Number of farms by size – 50 to 179 acres	728	645	681	836
Number of farms by size – 180 to 499 acres	1,155	1,100	982	900

Number of farms by size – 500 to 999 acres	230	226	221	193
Number of farms by size – 1,000 acres or more	43	50	47	58
Total cropland (farms)	2,307	2,159	2,051	2,185
Total cropland (acres)	419,596	400,489	376,191	374,984

(Source: 1987, 1992, 1997, 2002 US Census of Agriculture)

Table 3.1.1 gives the number of farms in Grant County for the years 1987 through 2002. The County showed a 0.8% increase in farms between 1987 and 2002. Paradoxically, as the number of farms has increased, the acres of farmland have decreased 7% in the same timeframe.

Although average farm size decreased 7% from 1987 to 2002, in the same period, small farms (10 to 49 acres) increased 124%. Very large farms (1,000+ acres) increased 35%, as did farms from 50 to 179 acres (15%). All other farm size classes decreased. The conclusion is that there are more very large (“super”) farms, “hobby” farms have more than doubled, while “working” or “family” farms have declined.

Table 3.1.2 Trends in Dairy Farms 1987 – 2002

Grant County	1987	1992	1997	2002
Milk cows (farms)	1,313	1,089	878	665
Milk cows (number)	66,728	58,995	52,702	46,564

(Source: 1997, 2002, US Census of Agriculture)

Table 3.1.2 shows clearly that both the number dairy farms and dairy cows in Grant County dropped dramatically (49% and 30% respectively) between 1987 and 2002.

3.1.5 LAND SALES STATISTICS AND GRAPHS

As required by the comprehensive planning process, statistics and graphs of land sales information are included below. Unfortunately, the data does not document land sales at the City level, nor is it as current as one would like. However, despite these limitations, it is clear from Table 3.1.3 that the value of land (both Ag and land sold for non-Ag uses) has been rising and for some time, too (in particular, the value of agricultural land diverted to other uses peaked in 2003). This trend of the last decade is no doubt continuing and therefore it is likely to affect future efforts by farmers to compete for the land base needed to remain in agriculture.

Table 3.1.3 Grant County Agricultural Land Sales: Total Agricultural Land

Agricultural land continuing in agricultural use							
	1999	2000	2001	2002	2003	2004	2005
Number of transactions	78	43	32	25	29	67	43
Acres sold	9,772	6,603	3,652	2,173	3,872	9,459	4,967
Dollars per acre	\$1,326	\$1,512	\$1,822	\$1,549	\$2,073	\$2,377	\$2,532
Agricultural land diverted to other uses							
Number of transactions	41	9	13	9	5	9	12
Acres sold	3,114	822	981	311	360	528	1,241
Dollars per acre	\$1,137	\$1,572	\$1,750	\$1,435	\$2,676	\$2,336	\$2,857
Totals							
Number of transactions	119	52	45	34	34	76	55
Acres sold	12,886	7,425	4,633	2,484	4,232	9,987	6,208
Dollars per acre	\$1,280	\$1,519	\$1,807	\$1,535	\$2,124	\$2,375	\$2,597

(Source: 2006, National Agricultural Statistics Service)

3.1.6 AGRICULTURAL ECONOMY

As shown in Table 3.1.4, thirty-two persons living in the City of Lancaster listed their occupations as farmer or farm manager in the 2000 census. Note that these occupations may not be in the City the farmer or farm manager is living in. However, it does provide a general overview of the City’s population of farmers.

Table 3.1.4 Farmers and Farm Managers as Number and Percent of Total City Population

Jurisdiction	Population	Number of Persons Employed as Farmers and Farm Managers	Percent of Persons Employed as Farmers and Farm Managers
Town of Beetown	734	93	12.7%
Town of Bloomington	399	43	10.8%
Town of Boscobel	433	4	0.9%
Town of Cassville	487	54	11.1%
Town of Castle Rock	487	37	7.6%
Town of Clifton	304	42	13.8%
Town of Ellenboro	608	35	5.8%
Town of Fennimore	599	31	5.2%
Town of Glen Haven	490	48	9.8%
Town of Harrison	497	36	7.2%
Town of Hazel Green	1043	63	6.0%
Town of Hickory Grove	443	40	9.0%
Town of Jamestown	2077	48	2.3%
Town of Liberty	552	57	10.3%
Town of Lima	721	85	11.8%
Town of Little Grant	257	66	25.7%
Town of Marion	517	25	4.8%
Town of Millville	147	9	6.1%
Town of Mount Hope	225	33	14.7%
Town of Mount Ida	523	52	9.9%
Town of Muscoda	674	20	3.0%
Town of North Lancaster	515	65	12.6%

Table 3.1.4 (cont.) Farmers and Farm Managers as Number and Percent of Total City Population

Jurisdiction	Population	Number of Persons Employed as Farmers and Farm Managers	Percent of Persons Employed as Farmers and Farm Managers
Town of Paris	754	63	8.4%
Town of Patch Grove	390	58	14.9%
Town of Platteville	1343	48	3.6%
Town of Potosi	831	43	5.2%
Town of Smelser	756	48	6.3%
Town of South Lancaster	808	67	8.3%
Town of Waterloo	557	51	9.2%
Town of Waterstown	362	23	6.4%
Town of Wingville	394	59	15.0%
Town of Woodman	194	12	6.2%
Town of Wyalusing	370	31	8.4%
Village of Bagley	339	0	0.0%
Village of Bloomington	701	14	2.0%
Village of Blue River	429	2	0.5%
Village of Cassville	1085	7	0.6%
Village of Dickeyville	1043	2	0.2%
Village of Hazel Green	1171	11	0.9%
Village of Livingston	584	10	1.7%
Village of Montfort	603	0	0.0%
Village of Mount Hope	186	2	1.1%
Village of Muscoda	1357	5	0.4%
Village of Patch Grove	166	4	2.4%
Village of Potosi	711	2	0.3%
Village of Tennyson	370	6	1.6%
Village of Woodman	96	0	0.0%
City of Boscobel	3047	3	0.1%
City of Cuba City	1945	17	0.9%
City of Fennimore	2387	19	0.8%

City of Lancaster	4070	32	0.8%
City of Platteville	9989	48	0.5%
Total	49770	1673	

(Source: 2000 Population Census)

3.1.7 AGRICULTURAL INFRASTRUCTURE

Farming infrastructure includes businesses and services such as feed mills, adequate roads, equipment vendors, cheese factories, seed dealers, or veterinarians might supply. Farm supply businesses and food processing facilities represent important resources to area farmers as well as the broader local economy. The City of Lancaster’s farming infrastructure includes the Regional Agriculture Service Center.

3.1.8 PHYSICAL CHARACTERISTICS

Attached is the soils map (Map 3.1.1) for the City of Lancaster.

3.1.9 CONFLICTS AND THREATS TO AGRICULTURE

With the changes in development pressure and the transition out of farming by many, the nature of the industry is rapidly changing. Some of the conflicts and threats are within local control and some are tied to state, national and global decisions. This comprehensive plan cannot impact decisions such as commodity prices, which are set on the world market and the reduced marketing opportunities as a result of consolidation. What the plan can do, is respond to local conflicts and issues such as

- Conflicts with new residents with non-agriculture backgrounds, including smells and odors, traffic conflicts, animal waste disposal, trespassing, dust, manure and mud on the roads, chemical applications, equipment noise, lights, and fencing requirements.
- Fragmentation of farm fields as new parcels are created.
- Agricultural land values exceeding possible agricultural income opportunities.
- The challenges of developing a new generation of farmers.

Through cooperative planning for large farm siting, a growth ring for the City, and the encouragement of agriculture safety, Lancaster could work with Grant County to support agricultural activities.

3.1.10 FUTURE OF AGRICULTURE

Agriculture is changing rapidly and it is likely to continue to do so. It appears that the future will include three types of operations: larger commodity producers, niche/specialty producers, and life-style farming operations. In the past, the commodity producers were dominant, but this is changing as traditional dairy producers and older farmers are leaving the business.

3.1.11 AGRICULTURE RESOURCES, AGENCIES AND PROGRAMS

There are a number of available county, state and federal programs to assist with agricultural planning and protection. Below are brief descriptions of the various agencies and programs. The Farm Service Agency, Natural Resources Conservation Services, and the Conservation District offices are located at the Grant County Land Conservation Department, at 150 W. Alona Lane, Suite 1, Lancaster, WI 53813-2188 (608-723-6377). The UW Extension office is located at the Youth and Agriculture Center, 916 E. Elm Street, Fairgrounds, PO Box 31, Lancaster WI 53818-2125 (phone 608- 723-2125 and fax 608-723-4315).

USDA FARM SERVICE AGENCY

The U.S. Department of Agriculture's Farm Service Agency (FSA) has a direct financial impact on rural Wisconsin families through the programs and services they offer. They are dedicated to stabilizing farm income, helping farmers conserve land and water resources, providing credit to new or disadvantaged farmers and ranchers, and helping farm operations recover from the effects of disaster.

Programs and services offered by the FSA are

- **Farm Loan Program (FLP)**

USDA FARM SERVICE AGENCY

WISCONSIN STATE OFFICE
8030 Excelsior Drive
Madison, WI 53717-2905

Phone (608) 662-4422
Fax (608) 662-9425

<http://www.fsa.usda.gov/WI>

The Farm Service Agency offers direct and guaranteed farm ownership and operating loans to farmers who are temporarily unable to obtain private, commercial credit.

Often, FLP borrowers are beginning farmers who cannot qualify for conventional loans because they have insufficient financial resources. The Agency also helps established farmers who have suffered financial setbacks from natural disasters, or whose resources are too limited to maintain profitable farming operations.

- **Conservation Reserve Program (CRP)**

The CRP is a voluntary program that offers annual rental payments, incentive payments for certain activities, and cost-share assistance to establish approved cover on eligible cropland. The program encourages farmers to plant long-term resource-conserving covers to improve soil, water, and wildlife resources. The Commodity Credit Corporation (CCC) makes available assistance in an amount equal to not more than 50 percent of the participant's costs in establishing approved practices. Contract duration is between 10 and 15 years.

- **Direct and Counter-Cyclical Payments (DCP)** The 2002 Farm Bill makes payments to eligible producers of covered commodities for the 2002 through 2007 crop years. Direct and counter-cyclical payments are made to producers with established crop bases and payment yields. Payment rates for direct payments were established by the 2002 Farm Bill and are issued regardless of market prices. Producers also are eligible for counter-cyclical payments, but payments are issued only if effective prices are less than the target prices set in the 2002 Farm Bill. Commodities eligible for both direct and counter-cyclical payments include wheat, corn, sorghum, barley, oats, upland cotton, rice, soybeans, sunflower seeds, canola, flaxseed, mustard, safflower, rapeseed, and peanuts.

- **Milk Income Loss Contract Program (MILC)**

This program, authorized by the 2002 Farm Bill, financially compensates dairy producers when domestic milk prices fall below a specified level. Eligible dairy producers are those who produced milk in any state and marketed the milk commercially beginning December 2001. To be approved for the program, producers must be in compliance with highly erodible and wetland conservation provisions and must enter into a contract with USDA's Commodity Credit Corporation to provide monthly marketing data.

NATURAL RESOURCES CONSERVATION SERVICE

The Natural Resources Conservation Service (NRCS) is the federal agency that works with landowners on private lands to conserve natural resources. NRCS is part of the U.S. Department of Agriculture, formerly the Soil Conservation Service. Nearly three-fourths of the technical assistance provided by the agency goes to helping farmers and ranchers develop conservation systems uniquely suited to their land and individual ways of doing business. The agency also assists other private landowners and rural and urban communities to reduce erosion, conserve and protect water, and solve other resource problems. NRCS provides:

- **Technical Assistance for Conservation**

Conservation technical assistance is the basis of NRCS mission to conserve, sustain, and improve America's private lands. NRCS staff works one-on-one with private landowners to develop and implement conservation plans that protect the soil, water, air, plant and animal resources on the 1.5 billion acres of privately owned land in the United States.

- **Soil Survey**

NRCS is responsible for surveying the soils of the United States, publishing and interpreting soil information. Soil information is the basis for natural resource and land use planning, key to assessing site potential for specific uses and identifying soil characteristics and properties.

- **National Resources Inventory**

Every five years, NRCS conducts the National Resources Inventory (NRI) on nonfederal rural land in the United States. This inventory shows natural resource trends, such as land cover and use, soil erosion, prime farmland, and wetlands. The 1992 NRI, for example, shows that farmers are dramatically reducing soil

**WISCONSIN NATURAL
RESOURCES CONSERVATION
SERVICE (NRCS)**

**6515 Watts Road
Suite 200
Madison, WI 53719**

Phone (608) 276-USDA

<http://www.wi.nrcs.usda.gov>

erosion on cropland. From 1982 to 1992, erosion on all cropland declined by about one-third, going from 3.1 billion to 2.1 billion tons a year.

- **Wetlands**

Wetland conservation is an important and sensitive issue. During 1982-1992, wetland losses due to agriculture slowed to about 31,000 acres a year, a more than 90 percent reduction compared to conversion rates between 1954 and 1974. NRCS is one of the four primary federal agencies involved with wetlands.

- **Wetlands Reserve Program**

In the Wetlands Reserve Program, conservation easements are purchased from landowners to restore or enhance wetland areas. Ownership, control of access, and some compatible uses remain with the landowner.

- **Wetland Identification**

NRCS has technical leadership for identification and delineation of wetlands on agricultural lands and on all USDA program participant's lands. NRCS maintains a list of hydric soils and a wetland inventory on agricultural land.

- **Soil Quality**

Over the past decade, NRCS has been helping producers develop and implement 1.7 million conservation plans on 143 million acres of highly erodible cropland as part of the conservation compliance provision of the Food Security Act of 1985. As a result, erosion on the most highly erodible cropland has been cut by two-thirds.

- **Water Quality**

NRCS assists farmers to improve water quality. This includes improving nutrient and pesticide management and reducing soil erosion, thus decreasing sediment that would otherwise end up in lakes and streams. Technical assistance, including engineering, structure design and layout for manure management and water quality practices contributes significantly to state water quality efforts. Through the Environmental Quality Incentive Program, NRCS provides technical and financial assistance for local resource priorities.

WISCONSIN FARM CENTER

The Wisconsin Farm Center provides services to Wisconsin farmers and agribusinesses to promote the vitality of the state's agricultural economy and rural communities. Services include:

- **Growing Wisconsin Agriculture**

Wisconsin is committed to the long-term profitability of agricultural businesses. Legislation passed in 2004 strengthens agriculture and invites producers to invest, reinvest and expand.

- **Financial Counseling and Advising**

The Farm Center's financial experts are trained in feasibility analysis, enterprise analysis, debt analysis along with restructuring and cash flow projection. They can personally assist producers and answer specific questions, providing useful resource materials.

- **Farm Mediation**

The Farm Center's farm mediation program provides dispute resolution services to farmers with problems involving creditor-debtor issues; U.S. Department of Agriculture program benefits; contracts with food processors, fertilizer, seed or feed dealers; conflicts within farm families; and landlord-tenant issues.

- **Stray Voltage**

Through Rural Electrical Power Services, the Farm Center provides information about stray voltage and power quality issues; answers to regulatory questions; on-farm and distribution system investigations by a

**WISCONSIN DEPARTMENT OF TRADE
AND CONSUMER PROTECTION
(DATCP)**

WISCONSIN FARM CENTER

**2811 Agriculture Drive
PO Box 8911
Madison, WI 53708**

Phone (608) 224-4960

<http://www.datcp.state.wi.us>

technical team that can assist farmers in working with the utility or electrician to resolve a power quality conflict; a format for dispute resolution; and research on electrical issues.

- **Legal**

The Farm Center's agricultural attorney can answer general legal questions about farm business organization, landlord-tenant issues, debt restructuring, legal procedures, creditor-debtor law, and tax reorganization and estate planning.

- **Vocational**

The Farm Center can help farmers or their family members make a successful transition to off-farm employment. It can help them examine their skills and explore their career options, regardless of whether they are looking to add off-farm income to the farm operation, starting a new small business, or seeking off-farm employment.

- **Farm Transfers**

Through its Farm Link program, the Farm Center can help farmers who want to start their own operation, retiring farmers who want someone to take over their operation, or farmers who want to relocate due to urban or environmental pressures.

- **Animal Agriculture**

Animals are a vital part of agriculture in Wisconsin. Whether you are a farmer, a veterinarian, a livestock dealer or trucker, or a consumer, DATCP provides information and regulates many aspects of animal agriculture.

- **Crops**

Statistics show Wisconsin ranks first in production of a number of agriculture crops. Farmers in the State continue to adopt traditional and specialty crops. Cultivating and protecting them is key.

- **Land and Water**

The State works with county land conservation departments to protect the environment through conservation practices, incentive programs and regulation.

3.2 NATURAL RESOURCES



3.2.1 NATURAL RESOURCE SUMMARY

It is vital for the City of Lancaster to consider its future in conjunction with its natural resources. It can be very challenging for rural communities to allow new development, while at the same time protecting the natural environment, preserving the character of an area. At first, development may have only a limited impact on the natural landscape, but as development continues, visual and environmental impacts become increasingly apparent. In order to protect natural resources for the future, it is crucial to be aware of existing natural resources, such as water, the geology of the region, forests and woodlands, wildlife habitat, and wetlands.

3.2.2 GOALS

The following are the Natural Resource Goals, two of the fourteen Smart Growth Planning Goals required by the planning grant contract.

1. Protect natural areas, including wetlands, wildlife habitats, lakes, woodlands, open spaces, and groundwater resources.
2. Protect economically productive areas, including farmland and forests.

3.2.3 OBJECTIVES AND POLICY AND PROGRAM RECOMMENDATIONS

The following natural resource objectives and policy recommendations will support the above goals and will guide natural resource decisions in the City of Lancaster over the next 20 years.

NOT IN ORDER OF PRIORITY

1. **Provide adequate outdoor recreation facilities for the jurisdiction.**
2. **Encourage the preservation of scenic, historic, and scientific areas for the benefit of present and future generations.**
3. **Avoid disturbances to wetlands, shorelands, and floodplains, discouraging disturbances to other environmentally sensitive areas and corridors.**

4. **Encourage tree preservation, municipal tree-planting programs, and sustainable forestry practices in the jurisdiction.**
5. **Incorporate natural areas into parks and open spaces to provide recreational opportunities and protect natural resources.**
6. **Encourage the suppression and limitation of noxious weeds.**
7. **Protect major drainage corridors from development to aid in stormwater runoff and prevent flooding.**
8. **Maintain wellhead protection plan for existing and future municipal wells.**
9. **Maintain standards to decrease light pollution from improper fixtures.**
10. **Establish standards to identify noise pollution.**
11. **Where and when appropriate, utilize county, state, and federal programs or grants to conserve, maintain, and protect natural resources.**

3.2.4 COMMON NATURAL RESOURCES

Natural resources are materials such as water, topsoil, air, land, forests, fish and wildlife, and minerals occurring in nature that are essential or useful to humans. They have significance economically, recreationally, culturally, and aesthetically. These resources are combined into the recognized natural systems in which we live. These systems, or combinations of natural materials, can be referred to as “natural environments”, “ecosystems”, “biomes”, or “natural habitats”. Human activities affect all natural resources which in turn can have significant, sometimes adverse, impacts on the human community.

Lancaster’s natural resources provide City residents with an opportunity to connect to the land through parks and the like. The area natural resources are some of the basic building blocks of tourism, making natural resources economically important, as well as recreationally and aesthetically significant.

Keeping residents informed of their jurisdiction’s natural resources is a proactive first step in supporting natural resource protection efforts. Flyers included with a tax mailing, articles in the local newspaper, workshops, or other similar education efforts can all help to educate residents on natural resource issues. The City keeps its citizens informed of natural resource issues through newsletters.

Fostering working relationships with your neighboring jurisdictions can help the City of Lancaster protect shared, contiguous natural areas that give local residents space to pursue recreational opportunities. Tapping into state and federal programs aimed specifically at protecting farmland, wetlands, and forests can help protect Lancaster’s natural resources. State and federal agencies and contact information are listed at the end of this chapter. Unfortunately, the City of Lancaster currently does not work with its neighboring jurisdictions to protect shared natural resources but perhaps in the future, the jurisdictions concerned could share information from their Plans.

3.2.5 WATER RESOURCES

Water is probably the most commonly used natural resource, serving intrinsic and essential functions in the community on a daily basis for people, plants, and animals. A watershed is the land area from which all area waters (surface and groundwater) drain into stream systems and aquifers. Groundwater aquifers can be contained within a single watershed or can be so large that several watersheds are within the aquifer. Over 70% of all Wisconsin communities (that is, every two out of three State residents) rely on groundwater not only for domestic use, but also for agriculture, industrial uses, and recreational purposes. The City of Lancaster is in three watersheds: the Upper Grant River Watershed, the Platte River Watershed, and the Middle Grant River Watershed. See Map 3.2.1, for the City of Lancaster Water Resource Map and Map 3.2.2, County Depth to Water Table Map for more information.

3.2.5.1 GROUNDWATER

Groundwater is the water beneath the earth's surface filling spaces between rocks and soil particles and flowing between them. Groundwater fills wells and supplies the flow from springs. It is a critical resource, not only because it is used constantly, but also because rivers, streams, and other surface water depend on it for recharge.

Groundwater can easily be contaminated through non-point source pollution, particularly in regions with thin soils over fractured limestone, sandstone, and shale bedrock.

All of Lancaster's domestic water use comes from groundwater and supplies its residents with public water service. The City does not supply water to any other jurisdiction.

3.2.5.2 GROUNDWATER CONTAMINATION

It is important to keep groundwater in mind for many areas of comprehensive planning. Ultimately, what takes place above ground affects groundwater below. There are a variety of land use practices influencing water resource quality. Potential pollution sources that can affect groundwater in Lancaster include but are not limited to

- On-site septic systems
- Sewage Treatment Plants
- Surface Waste Water Discharge
- Landfills
- Underground Storage Tanks
- Feedlots
- Junkyards
- Abandoned Quarries
- Abandoned Wells
- Pesticide and Fertilizer Applications
- Road Salt
- Household Cleaners and Detergents
- Unsewered Subdivisions
- Gas Stations
- Chemical Spills
- Leaking Sewer Lines

Because of its mobile nature, contaminants can travel far from their source through the water cycle. Contaminants in water coming from a variety of sources identified as non-point source pollution (NPSP), which can come from things like agriculture runoff, leaking septic systems, road salt and road building, parking lots, lawn, and golf course runoff, all of which directly impact water resources. Point source pollution comes from identifiable sources such as a single factory or overflow from a sewage treatment facility.

Pinpointing pollution sources can be made easier by identifying the location of potential pollutants, so communities can plan where and how much development can be built with the least amount of impact to the watershed. Contamination of local drinking water resources can be devastating, very costly to reverse, and affects all area residents. In order to protect its water resources, Lancaster uses a wellhead protection ordinance and properly abandons any wells.

A wellhead protection plan lists potential contaminants as well as aim at preventing those contaminants from entering the area of land around wells. This area includes, "the surface or subsurface area surrounding a water well or wellfield supplying a water system, through which contaminants are reasonably likely to move toward and reach such well or wellfield" (US EPA. 1987). Lancaster has a wellhead protection plan that helps to protect its drinking water resource.

3.2.5.3 GROUNDWATER SUPPLY

Water supply is impacted as communities grow, bringing increased demand to supply water to new homes, businesses, and industries. High capacity wells and an increasing number of wells, both private and public, can reduce the amount of recharge to surface waters, causing streamflow reduction, loss of springs, and changes in wetland vegetative communities. The strains of meeting growing water demand from a sprawling population are starting to show. Statewide water use has increased 33% in the last 15 years and water tables are plummeting in many urban areas as the thirst for more water outstrips the land's ability to provide it. (Lisa Gaumnitz, Tim Asplund, and Megan R. Matthews, "A Growing Thirst for Groundwater", August 2004.)

The Groundwater Bill (2003 Act 310) addresses groundwater quantity issues, requiring approval for siting, fees, and an environmental review. While this legislation is currently more relevant in areas of the state experiencing severe water quantity issues (such as Southeast Wisconsin), the principle of controlling groundwater withdrawal in all parts of the state is quite important and is a growing concern for the future. A State level groundwater advisory committee is now meeting to address groundwater management issues to be of help to communities.

3.2.5.4 SURFACE WATER

Surface water, which is all water naturally open to the atmosphere such as rivers, lakes, reservoirs, ponds, streams, impoundments, seas, and estuaries, in the City of Lancaster includes Pigeon Creek. This watercourse provides recreational opportunities, such as fishing, canoeing, wildlife viewing, swimming, and bird watching. It also provides essential habitat for fish, mussels, insects, and other wildlife. See Map 3.2.1, County Water Resource Map for more information.

The City's stormwater utility and Erosion Control Ordinance are the specific protections use to protect their surface waters.

3.2.5.5 WETLANDS

Wetlands serve a variety of functions, including an important role in stormwater management and flood control, filtering pollutants, recharging groundwater, providing a habitat for many wildlife species and plants, and offering open space and passive recreational opportunities. Wetlands include all marshes, swamps, fens, bogs, and those areas excluded from cultivation or other uses because they are intermittently wet and have hydric soils. The City of Lancaster is within the Southwest Savanna ecological landscape, an area in which most wetlands are associated primarily with the rivers and streams. The importance of glacial activity in forming lakes and wetlands is illustrated by the lack of these water bodies in the Driftless Area of southwestern Wisconsin (see Map 3.2.1.). In fact, wetlands comprise only 1% of the land cover in Southwest Savanna landscape (Wisconsin Land Legacy Report, 2002). The Western Coulee and Ridges region (of which northern Grant County is a part of) has much more wetland area (22% open wetland, 24% forested wetland) but the overall percentage of wetland for Grant County is still only 3.1% (WI-DNR 2007). Grant County wetlands are mainly associated with either the Wisconsin or Mississippi rivers because most of the County has experienced wetland drainage for agricultural purposes or the landscape is too hilly. Also, the Driftless Area has very little open, natural lakes with associated wetlands.

3.2.5.6 FLOODPLAINS

A floodplain is a low area of land adjacent to a stream or other watercourse subject to flooding. Floodplains hold water overflow during a flood and are delineated based on the 100-year storm event - the area that would be covered by water during a flood so big it theoretically only happens every 100 years. However, the magnitude of the 100-year storm flooding can occur any year. For that reason, development should not occur in drainage ways and floodplains since they serve as stormwater runoff systems and flood mitigation landscape features.

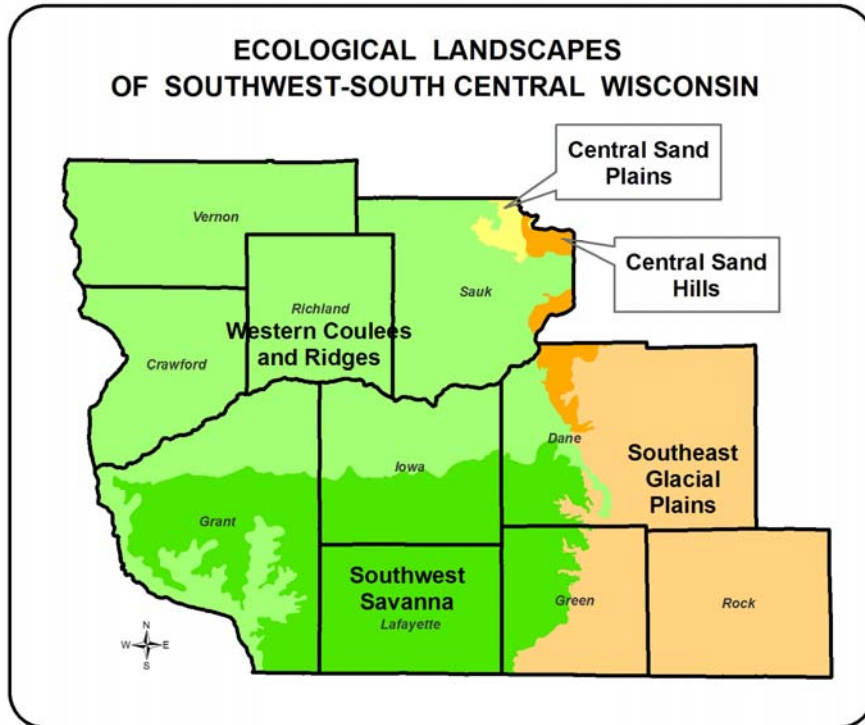
Counties, cities, and villages are required to adopt reasonable and effective floodplain zoning ordinances in order to participate in the Federal Emergency Management Agency's (FEMA) National Flood Insurance Program. Towns generally rely on their county for floodplain control.

FEMA has designated flood hazard areas along many surface water resources. The importance of respecting floodways and floodplains is critical in terms of planning and development. Ignoring these constraints can cause serious problems relating to property damage and the overall safety of residents. See Map 3.2.3 for the City's Flooding Frequency map.

3.2.6 WILDLIFE

It is vital to provide sufficient natural habitat at a distance from human activities where wildlife will not be in contact or conflict with humans and can live and breed without interference. Wildlife can sometimes cause problems by destroying property, carrying diseases, producing unsanitary waste, or conflicting with human activities so having enough habitat is critical.

Habitat is the combination of food, water, shelter, and space necessary to meet the needs of wildlife.



3.2.6.1 IMPORTANCE OF BIODIVERSITY

Biodiversity is the full spectrum of life forms and the many ecological processes supporting them. Protecting biodiversity is essential to core necessities such as maintaining clean air and water, providing adequate habitat for the state’s flora and fauna, maintaining a vibrant economy and providing recreational opportunities. Biodiversity protection depends on the sustainability of diverse ecosystems, such as the mosaic of forests, agricultural lands, grasslands, bluffs, coastal zones and aquatic communities present in Wisconsin. It also depends upon the conservation of each ecosystem’s basic components – the natural communities,

plants and animals within them. Ecosystems contain a variety of species that are unique and provide value to the diversity of the individual ecosystem and the state overall. It is important to view biodiversity at all levels to ensure the adequate conservation of Wisconsin’s environment.

At the broadest scale, the State of Wisconsin is divided into distinct “ecological landscapes” based on unique combinations of physical and biological characteristics that make up the ecosystems, such as climate, geology, soils, water, or vegetation. They differ in levels of biological productivity, habitat suitability for wildlife, presence of rare species and natural communities, and in many other ways that affect land use and management. The City of Lancaster is located in the Southwest Savanna

3.2.6.2 NATURAL COMMUNITIES

Ecological landscapes are comprised of natural communities – assemblages of plants and animals at specific locations. Because of the biotic and abiotic differences between ecological landscapes, the natural communities within each are typically different as well. The deeply dissected, unglaciated Southwest Savanna landscape was composed of tall grass prairie, oak savanna and some wooded slopes of oak forest. Today, this landscape is primarily in agricultural production with scattered woodlands, savannas and remnant prairies.

3.2.6.3 STATE NATURAL AREAS

Wisconsin harbors a diverse mix of natural biotic communities and native species. Some species and natural communities have very limited distribution or only occur at small locations around the state. In 1951, Wisconsin initiated the United State’s first statewide program to identify and protect areas of outstanding and unique ecological, geological, and archeological value. These natural areas provide the best examples of natural processes acting over time with limited impact of human activity. The State Natural Areas (SNA) program has grown to become the largest and most successful program of its kind in the nation; there are over 335 sites designated in Wisconsin.

State Natural Areas are important not only because they showcase the best and most pristine parts of Wisconsin, but also because they provide excellent wildlife habitat and undisturbed natural communities. Many threatened, endangered, and state special concern species can be found only in these areas.

There are eleven State Natural Areas in Grant County and include the Wyalusing Hardwood Forest, Dewey Heights Prairie, Blue River Sand Barrens, Wyalusing Walnut Forest, Ipswich Prairie, Adiantum Woods, Woodman Lake Sand Prairie and Dead Lake, Gasner Hollow Prairie, Snow Bottom, Blue River Bluffs, and Cassville Bluffs. All Grant County SNAs are open to the public.

3.2.6.4 ENDANGERED SPECIES

While the conservation of plants, animals and their habitat should be considered for all species, this is particularly important for rare or declining species. An endangered species is one whose continued existence is in jeopardy and may become extinct. A threatened species is one that is likely, within the foreseeable future, to become endangered. A special concern species is one about which some problem of abundance or distribution is suspected but not yet proven. The main purpose of the special concern category is to focus attention on certain species before they become endangered or threatened. Remaining examples of Wisconsin’s intact native communities are also tracked but not protected by the law. Natural communities capture much of our native biodiversity and provide benchmarks for future scientific studies. Protection of such species is a valuable and vital component of sustaining biodiversity.

Both the state and federal governments prepare their own separate lists of such plant and animal species but do so working in cooperation with one another, as well as with various other organizations and universities. The WI DNR’s Endangered Resources Program monitors endangered, threatened, and special concern species and maintains the state’s Natural Heritage Inventory (NHI) database. This program maintains data on the locations and status of rare species in Wisconsin and these data are exempt from the open records law due to their sensitive nature.

The Wisconsin Endangered Species Law was enacted to afford protection for certain wild animals and plants that the Legislature recognized as endangered or threatened and in need of protection as a matter of general state concern. It is illegal to

- 1) take, transport, possess, process or sell any wild animal that is included on the Wisconsin Endangered and Threatened Species List;
- 2) process or sell any wild plant that is a listed species;
- 3) cut, root up, sever, injure, destroy, remove, transport or carry away a listed plant on public lands or lands a person does not own, lease, or have the permission of the landowner. There are exemptions to the plant protection on public lands for forestry, agriculture and utility activities. In some cases, a person can conduct the above activities if permitted under a Department permit (i.e. “Scientific Take” Permit or an “Incidental Take” Permit).

The Federal Endangered Species Act also protects animals and plants that are considered endangered or threatened at a national level. The law prohibits the direct killing, taking, or other activities that may be detrimental to the species, including habitat modification or degradation, for all federally listed animals and designated critical habitat. Federally listed plants are also protected but only on federal lands. Implementation of the Endangered Species laws is usually accomplished during the state permit review process, but is ultimately the responsibility of a project proponent and property owner to ensure that they are not in violation of the laws.

According to the NHI database and listed in Table 3.2.1, thirteen elements have been recorded in the Town of North Lancaster and one in the Town of South Lancaster (the City of Lancaster lies in both towns). **Data is only provided to the town level.** The Town of South Lancaster reports only one element: the Blanchard Cricket Frog as is indicated in Table 3.2.1. Map 3.2.5 shows all elements known to occur within Grant County. Thorough inventories of the entire county have not been conducted for rare species. Additional rare species and their habitat may occur in other locations but they are not recorded within the NHI database. Remaining examples of Wisconsin’s intact native communities are tracked but not protected by the law. The descriptions of these threatened or endangered native communities in the jurisdiction are listed after Table 3.2.1.

NOTE: END = Endangered; THR = Threatened; SC = Special Concern

Table 3.2.1 Natural Heritage Inventory: Town of North and South Lancaster

Group	Scientific Name	Common Name	State Status	Date Listed
Bird	<i>Vireo bellii</i>	Bell’s Vireo	THR	2004
Butterfly	<i>Chlosyne gorgone</i>	Gorgone Checker Spot	SC	1994
Amphibian (x2)	<i>Acris crepitans blanchardi</i>	Blanchard’s Crocket Frog	END	1987
Plant	<i>Lespedeza leptostachya</i>	Prairie Bush-clover	END	2006

Plant	<i>Cacalia tuberosa</i>	Prairie Indian Plantain	THR	1989
Plant	<i>Parthenium integrifolium</i>	American Fever-few	THR	1993
Plant	<i>Onosmodium molle</i>	Marbleseed	SC	1995
Plant	<i>Cirsium hillii</i>	Hill's Thistle	THR	1995
Plant	<i>Asclepias lanuginosa</i>	Wolly Milkweed	THR	1993
Plant	<i>Talinum rugospermum</i>	Prairie Fame-flower	SC	1991
Plant	<i>Echinacea pallida</i>	Pale-purple Coneflower	THR	1987
Plant	<i>Orobanche uniflora</i>	One-flowered Broomrape	SC	1991
Plant	<i>Pediomelum esculentum</i>	Prairie Turnip	SC	1973

3.2.7 FOREST RESOURCES

Forests provide raw materials for the forest products industry and a venue for hunting, hiking, and fishing. Forests help sustain water resources and provide habitat for a wide variety of plants and animals, including threatened and endangered species and by balancing global warming effects and air pollution by producing oxygen and storing carbon. Over half the forested lands in Wisconsin are privately owned (57%). See Map 3.2.6 for forested lands in the City of Lancaster.

Trees are important components of a community’s green infrastructure, offering substantial environmental benefits, including cleaner air and water, quieter streets, cheaper energy bills, cooler temperatures, and wildlife habitat. Tree-planting programs, preserving established trees, and using sustainable forestry techniques not only increase property values for City residents, but also lower air and water remediation costs for the environment.

While Grant County has a great deal of land in agriculture, over a quarter of the County is forested: in 1983, 25% of Grant County (186,400 acres) was forested. As of 2004 (the most recent data available), 28% of the County was forested (209,623 acres). Most was in private ownership: 187,356 acres. (Data showing amount of forested land per City was not available.) In Grant County in 2006, the total number of privately owned acres of land in the Managed Forest Law program (MFL) was 19,510 acres, 3,751 of which were open to public for hunting and recreation. At this time there are probably no MFL acres in the City of Lancaster.

Environmental Corridor Benefits:

- Improved Wildlife Habitat
- Greater Biodiversity
- Reduced Flooding
- Reduced Soil Erosion
- Improved Water Quality
- Improved Water Quantity
- Groundwater Recharge
- Bank Stabilization
- Improved Air Quality

Social Benefits:

- Walking and Hiking
- Cross Country Skiing
- Horseback Riding
- Photography
- Wildlife Viewing

3.2.8 ENVIRONMENTAL CORRIDORS

Environmental corridors are physical areas containing groups of features (such as hedgerows or river bottoms) allowing animals and plants to move unobstructed across the landscape. Areas of concentrated natural resource activity (“rooms”), such as wetlands, woodlands, prairies, lakes, and other features, become even more functional and supportive of wildlife when linked by such corridors (“hallways”). If corridor resource features are mapped, they can depict linear spaces that can be helpful in future land development decisions. Fish and wildlife populations, native plant distribution, and even clean water all depend on movement through environmental corridors. For example, wildlife populations isolated in one wooded location can overpopulate, die out, or cause problems for neighbors if there are not adequate corridors to allow the population to move about and disperse freely. Over 70% of all terrestrial wildlife species use riparian corridors, according to the USDA Natural Resources Conservation Service (NRCS). By preserving environmental corridors, wildlife populations, both plant and animals can maintain themselves and be healthier. See Map 3.2.6, Natural and Recreational Resources, for natural resources that might lend themselves to providing wildlife unimpeded access through the landscape.

3.2.9 LIGHT, AIR, AND NOISE POLLUTION

Light, air, and noise pollution are not often considered when doing planning. However, improper environmental controls can produce air (odor) pollution and noise pollution. The most common air pollutants (dust, pollen, fuel fumes, ash, etc.) including odors, come from industrial, automotive, and agriculture sources. Burn barrels are significant local contributors to air pollution.

Air pollution does occur in Lancaster, mainly odor issues. The City requires industries use Federal air permits to control odor.

Inappropriate or overly bright outdoor lighting can spill over property lines provoking altercations with neighbors or impair driving conditions (e.g. very bright lighting for businesses producing eye level glare to passing drivers). Improper night lighting or light pollution, affects the night sky anywhere improperly shaded nighttime outdoor lights are used. Lighting ordinances recognize the benefits of appropriate outdoor lighting and can provide guidelines for installation, helping to maintain and compliment a community's character. Lancaster now has a light pollution prevention ordinance for its new subdivisions to address this issue.

A number of land uses can contribute to noise pollution, such as vehicle noise from highways, airport noise, or sounds from manufacturing facilities. Repetitive excessive noises like those from boom cars, loud stereos, powered lawn and garden equipment, and construction activities have been shown to have serious health consequences (e.g. tinnitus, balance problems), not to mention problems between neighbors. In Lancaster the most prevalent noise problems come from the race track at the fair grounds and industrial noises associated with City industry and manufacturing.

3.2.10 GEOLOGIC AND MINERAL RESOURCES

Soils and geology are important planning considerations, particularly when thinking about new development. Today, technological advances can overcome many challenges relating to soil and geology. However, it is important that these resources not be abused, overused, or contaminated. For example, particular attention must be paid to soils when development is occurring on steeper slopes. A series of maps showing slope limitations (Map 3.2.8), septic limitations (Map 3.2.9), and depth to bedrock (Map 3.2.10) have been included at the end of this Section.

Most of south/southwest Wisconsin's bedrock is sedimentary rock, consisting of sandstone and shale or limestone. Mineral resources are divided into two categories, metallic and non-metallic resources. Metallic resources in the region include lead and zinc. Historically, there was a great deal of lead and zinc mining in southern Grant County. Refer to Map 3.2.7 for historic mines in your jurisdiction.

3.2.10.1 NON-METALLIC MINE RECLAMATION

In June of 2001, all Wisconsin counties were obliged to adopt an ordinance for nonmetallic mine reclamation. The purpose of the ordinance is to achieve acceptable final site reclamation to an approved post-mining land use in compliance with uniform reclamation standards. Uniform reclamation standards address environmental protection measures including topsoil salvage and storage, surface and groundwater protection, and concurrent reclamation to minimize acreage exposed to wind and water erosion. Lancaster relies on the County's Non-metallic Ordinance.

3.2.10.2 QUARRIES

Non-metallic resources include sand, gravel, and limestone, resources that come from quarries. A quarry is an open-pit mine from which rock or minerals are extracted. Such rocks and minerals are generally used as dimension stone. Rock quarries are usually shallower than other types of open-pit mines. Types of rock extracted from quarries include cinders, coquina (a type of limestone), blue rock, granite, gritstone, limestone, marble, sandstone, and slate. Limestone for road building is one of the most significant non-metallic geologic resources in the area today.

In level areas, quarries often have special engineering problems for drainage. Groundwater seeping into the quarry pit must be pumped out. Many quarries fill with water to become ponds or small lakes after abandonment. Others have become landfills. Restricting access to quarries helps protect these areas from becoming groundwater pollution source points. Therefore, determining quarry locations within the jurisdiction's local watersheds can help communities plan where and how much development can be built, with respect to its water resources. Refer to Map 3.1.1, Soils Map.

3.2.11 NATURAL OPEN SPACE AND PARKS

Natural open space is that part of the landscape without obvious development. It can take the form of cropland and pastures, greenbelts, wetlands, woodlands, parks, or floodplains. The value of open space lies not only in its inherent protection of ecologically sensitive areas, but also in its appeal of naturalness to the passerby, the vacationer, and the outdoor enthusiast. Preserving open spaces not only protects natural resources, but also gives the viewer a sense of freedom with its visual impact of open space, whether it is agricultural land, woodlands, or a park. Lancaster protects its natural open spaces to some extent through the use of approved development plans.

Communities have signs and billboards for economic, safety, and information purposes. However, sometimes they can have a negative visual impact on the landscape, particularly if there are a lot of them, are very large, or are poorly placed. The City of Lancaster has its own sign ordinance which was adopted in August of 2005.

3.2.12 LOCAL PARK AND RECREATION RESOURCES

Every jurisdiction is unique and can capitalize on its natural beauty. Only in your community do those particular views, walks, and landmarks exist. Because each place is unique, opportunities exist to capitalize on its assets. For example, biking, driving, or walking tours can be designed to thread through areas of cultural, historical, or environmental significance. ATV, horse, or bike trails can be dotted with parks, scenic waysides, or rest stops.

Parks are attractions in their own right. They can serve a limited neighborhood area, a portion of the community, or the entire community or region and provide land and facilities for outdoor recreation for residents and visitors. Depending on park size, parks and recreation areas can attract campers, ball players, bird watchers, cyclists, snowmobilers, bikers, 4-wheelers, horseback riders, hunters, anglers, and other recreational users. Amenities such as ballparks, trails, camping areas, playground equipment are only some of the facilities that make parks and recreation areas so inviting. Refer to the Natural and Recreational Resources Map 3.2.6 for park locations. Table 3.2.2 shows recreational spaces in the City and the amenities available. Lancaster has an Outdoor Recreation Plan which was written in 2001 and was intended to cover the years from 2002 thru 2007.

Table 3.2.2 City of Lancaster Recreational Amenities

Park/Recreation Location	Shared Park/Recreation Locations	Recreational Amenities Available
Memorial Park	620 E Lincoln Ave	Swimming pool, picnic tables, 7 shelters, playground equipment, 2 softball diamonds (bleachers & lighting), basketball court, fishing pond, 2 volleyball courts, restrooms
Ryland Park	113 W. Elm	Schreiner Memorial Library
Klondyke Park	6323 Klondyke Lane	Picnic tables, shelter, restrooms, passive recreation space, trout stream
Schreiner Park	Schreiner Park Road	Nature trails, picnic shelter, picnic tables, fitness course
Golf Course	E. Lincoln Ave	18 hole golf course, clubhouse, outdoor picnic shelter
Schacht Fields	Bemis Road	Soccer fields
Baus Park	W. Nathan Street	Basketball court/ice rink, playground equipment, soccer/football field

Table 3.2.3 Additional Recreational Types, Locations, and Size

Type of Needed Facility	Location	Size/Length
Trail Connections	Bike Walking Trails	2 miles
Bathrooms	Baus & Memorial Park	1 mens, 1 womens, 1 accessible
Drinking water at all fields	Baus Park, Schacht Field	1 each
Ball field irrigation	Memorial Park, Baus Park, Schacht Field	

3.2.13 LAND COVER

Map 3.2.6 shows the natural resources in the City of Lancaster. It also shows the location of natural resources such as forested lands, open water, wetlands, and wildlife corridors.

3.2.14 NATURAL RESOURCE AGENCIES AND PROGRAMS

There are a number of available state and federal programs to assist with agricultural, natural, and cultural resource planning and protection. Below are brief descriptions of various agencies and programs. Contact information is provided for each agency. To find out more specific information or which program best fits your needs contact them directly.

WISCONSIN DEPARTMENT OF NATURAL RESOURCES (WI-DNR)

The Department of Natural Resources is dedicated to the preservation, protection, effective management, and maintenance of Wisconsin's natural resources. It is responsible for implementing the laws of the state and, where applicable, the laws of the federal government that protect and enhance the natural resources of our state. It is the one agency charged with full responsibility for coordinating the many disciplines and programs necessary to provide a clean environment and a full range of outdoor recreational opportunities for Wisconsin citizens and visitors. The Wisconsin DNR has a number of programs available ranging from threatened and endangered species to water quality to parks and open space to wetlands. The DNR is available to provide information on endangered and threatened species. See their website for the Endangered Resources (ER) Program at <http://www.dnr.state.wi.us/org/land/er/> or contact the Program at 608/266-7012.

WISCONSIN DEPARTMENT OF NATURAL RESOURCES (WI-DNR)

101 S Webster St
Madison WI 53703

Phone: 608-266-2621
Fax: 608-261-4380

<http://www.dnr.state.wi.us>

The Bureau of Community Financial Assistance (CFA) administers grant and loan programs, under the WI-DNR. Financial program staff works closely with local governments and interested groups to develop and support projects that protect public health and the environment, and provide recreational opportunities.

WISCONSIN DEPARTMENT OF TRADE AND CONSUMER PROTECTION (DATCP)

The Wisconsin Department of Trade and Consumer Protection inspects and licenses more than 100,000 businesses and individuals, analyzes millions of laboratory samples, conducts hundreds of hearings and investigations, educates businesses and consumers about best practices, adopts rules that have the force of law, and promotes Wisconsin agriculture at home and abroad.

Specifically DATCP has two divisions that relate directly to the agriculture and natural resource section of the comprehensive plan. The Environmental Division focuses on insects, land and water, as well as plants and animals. The Agricultural Division focuses on animals, crops, agricultural resources, and land and water resources.

WISCONSIN DEPARTMENT OF TRADE AND CONSUMER PROTECTION (DATCP)

2811 Agriculture Drive
PO Box 8911
Madison WI 53708

Phone: 608-224-4960

<http://www.datcp.state.wi.us>

WISCONSIN NATURAL RESOURCE CONSERVATION SERVICE (NRCS)

The Natural Resources Conservation Service is the federal agency that works with landowners on private lands to conserve natural resources. NRCS is part of the U.S. Department of Agriculture, formerly the Soil Conservation Service (SCS). Nearly three-fourths of the technical assistance provided by the agency goes to helping farmers and ranchers develop conservation systems uniquely suited to their land and individual ways of doing business. The agency also assists other private landowners and rural and urban communities to reduce erosion, conserve and protect water, and solve other resource problems.

WISCONSIN NATURAL RESOURCES CONSERVATION SERVICE (NRCS)

6515 Watts Road,
Suite 200
Madison, WI 53719

Phone (608) 276-USDA

<http://www.wi.nrcs.usda.gov>

**ENVIRONMENTAL PROTECTION AGENCY (EPA)
REGION 5**

The Environmental Protection Agency is a federal agency of the United States government, responsible for regulating environmental pollution and environmental quality. The EPA has been one of the lead agencies within the United States Government on the climate change issue.

Environmental Protection Agency
Region 5
(Illinois, Indiana, Michigan, Minnesota,
Ohio, Wisconsin)

Phone Toll Free within Region 5:
1-800-621-8431
9:00AM to 4:30PM CST

Phone: 312-353-2000
(<http://www.epa.gov>)

3.3 CULTURAL RESOURCES

3.3.1 CHAPTER SUMMARY

The purpose of this section is to inventory and support the management of cultural resources in the City of Lancaster. Many communities often ignore cultural and historic resources in order to deal with “real” issues facing their community. However, the proper appreciation of these assets is vital to the long-term success of a community. Respecting and utilizing these available resources increases the overall quality of life and provides opportunities for tourism.

Determining what cultural and historic resources are has been left open to some interpretation. For this Plan, historic resources include historic buildings and sites (as identified by the national register of historic places), museums, archeological sites, churches, cemeteries, old country schools, and other sites deemed appropriate by the community. The information is to serve as a guide to cultural and historic resources and is not inclusive.

Cultural resources are economically important to Lancaster as they generate incubators, tax bases, and related services. Aesthetically, cultural resources of the City help its citizens identify with Lancaster and its heritage. Finally, the pool and clubhouse fulfill recreational cultural needs.

3.3.2 GOALS

The following is the Cultural Resource Goal, one of the fourteen Smart Growth Planning Goals required by the planning grant contract.

1. Preserve cultural, historic, and archaeological sites.

3.3.3 OBJECTIVES AND POLICY AND PROGRAM RECOMMENDATIONS

The following cultural resources objectives and policy recommendation will support the above goal and will guide cultural resource decisions in the City of Lancaster over the next 20 years.

NOT IN ORDER OF PRIORITY

1. **Encourage the protection of important cultural resources in the community with the cooperation of property owners.**
2. **Continue to implement the community’s Historic Preservation Ordinance.**
3. **Continue to support important community festivals and cultural events.**
4. **Support opportunities that capitalize on local cultural resources together with tourism.**
5. **Where and when appropriate, utilize county, state, and federal programs or grants to conserve, maintain, and protect cultural resources.**

3.3.4 A BRIEF HISTORY OF GRANT COUNTY

Grant County was formed in 1836, the same year Wisconsin became a territory. It is the 10th largest county in the state with an area of 1,169 square miles. According to the 2000 census, the population, as adjusted, is 49,597. Grant County is located in the unglaciated region – the Driftless region.

Grant County received its name in 1810 from a white Indian trader named Grant, who visited the area regularly. Lead strikes attracted the first European settlers as early as 1825. When mining began to decline, the settlers discovered there was wealth in the rich soil and turned to farming. Agriculture is still the County’s chief source of income.

Lancaster, the County seat, is the home of the courthouse which was built in 1902 with an annex added on in 1999. The Courthouse is among the finest in the State. Monuments in the courtyard include the Soldiers Monument – one of the oldest monuments in the nation to the Civil War dead. It was built by public and private funds and dedicated July 4, 1867. The Fountain on the west side of the courtyard was purchased by the Ladies of the G.A.R. and given to the County in 1906. The bronze monument to Nelson Dewey on the courtyard’s east side was given by the State

as a tribute to Wisconsin's first governor. Dewey was also the first Register of Deeds for Grant County. He died in Cassville, WI and is buried in Westwood Cemetery, next to the Episcopal Church in Lancaster. His grave is marked by an official State marker dedicated October 1, 1961.

Source: Grant County Historical Society and Grant County Official Directory, 2006-2007

3.3.5 CULTURAL RESOURCE PUBLICATIONS OR DOCUMENTATION

Maintaining a written record of cultural resources is an excellent way of educating residents about a community's past as well as encouraging tourism. For more information, contact the Grant County Historical Society at 129 E Maple St., Lancaster, WI, 53813; Phone: (608) 723-4925. Lancaster's written history is available in a specific section in the City's downtown library.

3.3.6 LOCAL HISTORICAL SOCIETIES

Local historical societies provide an important service to communities by documenting, rehabilitating, maintaining, or promoting local cultural resources. Lancaster has the benefit of the City Historical Preservation Commission, the Dewey Heritage Society, and the Lancaster Historical Society when any question of local history comes up. Lancaster also has an Historic Preservation Ordinance, adopted in August of 2005. There is no museum in the City.

3.3.7 CULTURAL RESOURCES OF NOTE

Although it is understandable that parts of a community's cultural fabric wear thin, it is still important to at least recognize the community's cultural resources so the knowledge of what does exist is available to preservationists. And while a professional may be able to document significant buildings or landmarks as cultural important, it is the members of the community, those who live and die there, who are the best experts at identifying those aspects that make their community unique in the world. Lancaster's primary cultural resources include Pleasant Ridge, Dewey Church and Cemetery, several historic homes, the pool, bathhouse, and golf course, City Hall, Klondyke Park, SchreinerPark, the Library, the Courthouse, and the downtown businesses.

3.3.8 HISTORICAL MARKERS

Wisconsin Historical Markers identify, commemorate and honor the important people, places, and events that have contributed to the state's rich heritage. The Wisconsin Historical Society's Division of Historic Preservation administers the Historical Markers program. Contact them for more information. The table below lists the State registered historical markers in Grant County.

Table 3.3.1 Grant County Historic Markers

Subject	Location/Nearest Community
The Gideons	HWY 61, 0.5 mi S. of Soldiers Grove
Old Denniston House	117 East Front Street, Cassville
The "Dinky"	620 Lincoln Avenue, Fennimore
Point of Beginnings – Survey Point	HWY 80 at WI/IL state line, S. of Hazel Green
Nelson Dewey	Cemetery, 1 block W. HWY 61, 35, & 81, Lancaster
First State Normal School	Rountree Hall, Platteville

(Source: 2005, www.wisconsinhistory.org)

3.3.9 CULTURAL RESOURCE PROGRAMS AND SPECIAL EVENTS

Cultural resource programs and special events are very effective methods of bringing a community together to celebrate their cultural history. Not only do special events build community spirit, but they can also be important to the local economy. The Planning Commission noted that the City's special events include the Harvest Festival and the Bike Tour.

3.3.10 THREATS TO CULTURAL RESOURCES

Unfortunately, there are many threats to the cultural resources of a community. Whether it is development pressure, rehabilitation and maintenance costs, or simply the effects of time, it is often difficult to preserve the cultural resources in a community. The biggest threat to Lancaster's cultural resources is a lack of intent to protect such resources, and the lack of an adequate museum in the community. At this time the resources at greatest risk include St Clements Church and scattered locations and homes.

3.3.11 LOST CULTURAL RESOURCES OR BUILDINGS

Sometimes important cultural resources are irreparably lost due to deterioration, apathy, development pressure, lack of maintenance, or merely the march of time. Once lost, such cultural links to the past and the community's history are gone forever. The hotel, the Klondyke well house, the train depot, and the Reed Opera House have already been lost.

3.3.12 HISTORICAL PRESERVATION ORDINANCES AND COMMISSIONS

The establishment of a historical preservation ordinance and commission is one of the most proactive actions a community can take to preserve cultural resources. A historical preservation ordinance typically contains criteria for the designation of historic structures, districts, or places, and procedures for the nomination process, as well as regulates the construction, alteration and demolition of a designated historic site or structure. Contact the Wisconsin Historical Society's Division of Historic Preservation for more information. Lancaster has its own Historic Preservation Ordinance and Historic Preservation Commission, as the City is a Certified Local Government (CLG). Communities with historic preservation ordinances may apply for CLG status with the Wisconsin State Historical Society. Once a community is certified, they become eligible for

- Matching sub-grants from the federal Historic Preservation Fund,
- Use of Wisconsin Historic Building Code,
- Reviewing National Register of Historic Places nominations allocated to the state.

3.3.13 CHURCHES

Churches historically have had a significant impact on the culture of a community. They are also sometimes the only places in rural areas where residents can gather to discuss important issues in their community. Refer to Map 3.3.1 for churches in the jurisdiction.

3.3.14 CEMETERIES

Cemeteries are identified as prominent historic and cultural resources. They can provide an historic perspective of an area, providing names and ethnicities of previous residents, linking a community to its past. Refer to Map 3.3.1 for cemeteries in the City of Lancaster

3.3.15 ARCHITECTURE AND HISTORY INVENTORY (AHI)

The Architecture and History Inventory (AHI) is a collection of information on historic buildings, structures, sites, objects, and historic districts throughout Wisconsin. The AHI contains all the documented historic sites in a community, as well as a list of those sites that are on the State and National Register of Historic Places.

The AHI is comprised of written text and photographs of each property, which document the property's architecture and history. Most properties became part of the Inventory as a result of a systematic architectural and historical survey beginning in 1970s. (Caution should be used as the list is not comprehensive and some of the information may be dated, as some properties may be altered or no longer exist.) Due to funding cutbacks, the Historical Society has not been able to properly maintain the database. Also, note that many of the properties in the inventory are privately owned and are not open to the public. The Wisconsin Historical Society's Division of Historic Preservation maintains the inventory.

Table 3.3.2 lists the historical sites in the jurisdiction compiled by Richard Bernstein of the Office of Preservation Planning, Division of Historic Preservation of the Wisconsin Historical Society.

Table 3.3.2 City of Lancaster AHI

AHI #	Location	Historic Name
16167	126 W MAPLE ST	GRANT COUNTY COURTHOUSE
16960	210 N JEFFERSON ST	ARTHUR, L.J. HOUSE
44529	153 N ADAMS ST	
44557	226 N ADAMS ST	J. H. HYDE HOUSE
44561	317 N ADAMS ST	CHARLES H. ANGUS HOUSE
44567	338-340 N ADAMS ST	
44570	354 N ADAMS ST	
44576	523 N ADAMS ST	
44579	607 N ADAMS ST	
44586	644 N ADAMS ST	
44590	647 N ADAMS ST	
44593	656 N ADAMS ST	
44597	802 N ADAMS ST	
44600	852 N ADAMS ST	
44603	863 N ADAMS ST	
44604	900 N ADAMS ST	
44607	907 N ADAMS ST	
44611	208-212 S ADAMS ST	CONGREGATIONAL CHURCH
44612	407 S ADAMS ST	E. B. FARRAR HOUSE
44615	408 S ADAMS ST	ALEXANDER IVEY HOUSE
44617	427 S ADAMS ST	JOE WRIGHT HOUSE
44619	430 S ADAMS ST	
44626	443 S ADAMS ST	
44629	503 S ADAMS ST	
44635	550 S ADAMS ST	
44637	615 S ADAMS ST	
44643	709 S ADAMS ST	JOHN VESPERMAN HOUSE
44650	734 S ADAMS ST	
44653	743 S ADAMS ST	
44655	856 S ADAMS ST	
44659	901 S ADAMS ST	
44660	926 S ADAMS ST	
44661	550 BEETOWN RD	
44662	649-651 BEETOWN RD	
44665	700 BEETOWN RD	
44667	751 BEETOWN RD	
44669	769 BEETOWN RD	
44671	901 BEETOWN RD	
44673	907 BEETOWN RD	
44675	949 BEETOWN RD	
44677	1005 BEETOWN RD	
44679	206 E BIRCH ST	
44681	234 E BIRCH ST	
44683	308 E CHERRY ST	
44684	341 E CHERRY ST	
44686	702 E CHERRY ST	
44688	709 E CHERRY ST	ANTON SCHMITT HOUSE
44694	205 W CHERRY ST	MARY BAILEY COMMERCIAL BUILDING
44700	217 W CHERRY ST	EDWARD H. HYDE BUILDING
44701	308 W CHERRY ST	
44705	400 W CHERRY ST	DR. J. H. REED HOUSE
44707	935 W CHERRY ST	
44708	NW CORNER OF COURTHOUSE SQUARE	
44709	NE CORNER OF COURTHOUSE SQUARE	
44714	SE CORNER OF COURTHOUSE SQUARE	
44716	121 E ELM ST	H. G. NATHAN HOUSE
44717	238 E ELM ST	
44718	358 W ELM ST	LANCASTER BUTTER AND CHEESE COMPANY
44720	422 W ELM ST	
44721	511 W ELM ST	HENRY MUESSE HOUSE
44724	536 W ELM ST	
44727	545 W ELM ST	
44728	735 W ELM ST	

Table 3.3.2 (cont.) City of Lancaster AHI

AHI #	Location	Historic Name
44729	833 W ELM ST	
44730	424 N FILLMORE ST	MARGARET AND PATRICK KINNEY HOUSE
44731	158 S FILLMORE ST	
44732	207 S FILLMORE ST	
44733	226 N HARRISON ST	
44734	248 N HARRISON ST	
44735	352 N HARRISON ST	W. F. JOECKEL HOUSE
44736	450 N HARRISON ST	
44740	111 S HARRISON ST	
44742	145 S HARRISON ST	JACOB DERSCH HOUSE
44745	207 S HARRISON ST	HORACE HYMER HOUSE
44749	253 S HARRISON ST	FRANKLIN HALBERT HOUSE
44751	254 S HARRISON ST	
44756	306 S HARRISON ST	
44759	621 S HARRISON ST	
44761	130 E HICKORY ST	
44762	147 W HICKORY ST	NELSON DEWEY HOUSE
44765	347 W HICKORY ST	
44767	351 W HICKORY ST	
44770	352 W HICKORY ST	
44771	410 W HICKORY ST	
44773	434 W HICKORY ST	
44775	437 W HICKORY ST	
44779	611 W HICKORY ST	STEPHEN HARVEY TAYLOR HOUSE
44780	644 W HICKORY ST	
44781	254 S JACKSON ST	
44782	125 N JEFFERSON ST	EDWARD POLLOCK BUILDING
44785	135 N JEFFERSON ST	MRS. M. A. REED HOUSE
44786	140 N JEFFERSON ST	MAJOR G.M. PRICE HOUSE
44787	232 N JEFFERSON ST	
44788	248 N JEFFERSON ST	ROBERT BROOKER HOUSE
44789	249 JEFFERSON ST	H. A. W. MCNAIR HOUSE
44790	312 N JEFFERSON ST	JOHN COVER HOUSE
44791	350 N JEFFERSON ST	JUDGE GEORGE CLEMENTSON HOUSE
44792	407-409 N JEFFERSON ST	
44793	421 N JEFFERSON ST	
44794	451 N JEFFERSON ST	
44795	509 N JEFFERSON ST	
44797	600 N JEFFERSON ST	
44798	604 N JEFFERSON ST	
44799	620 N JEFFERSON ST	
44800	111 S JEFFERSON ST	GRANT COUNTY JAIL
44801	129 S JEFFERSON ST	S. MITCHELL BUILDING
44802	137 S JEFFERSON ST	MUESSE AND BROOKER BLOCK
44803	143 S JEFFERSON ST	EDWARD H. HYDE BUILDING
44804	230 S JEFFERSON ST	ANTHONY CROSBY HOUSE
44805	256 S JEFFERSON ST	
44807	300 S JEFFERSON ST (SE CORNER OF JEFFERSON ST AT WALNUT ST)	EMMANUEL EPISCOPAL CHURCH OF WESTWOOD PARISH
44809	305 S JEFFERSON ST	
44812	353 S JEFFERSON ST	
44813	206 E LINCOLN AVE	
44814	215 E LINCOLN AVE	WILLIAM TUCKWOOD HOUSE
44815	410 E LINCOLN AVE	
44816	508 E LINCOLN AVE	
44817	NE CORNER OF LINCOLN AVE AND EATON ST	MUNICIPAL BATHHOUSE (?)
44819	218 E LINDEN ST	
44821	333 E LINDEN ST	
44827	143 W LINDEN ST	
44829	W LINDEN ST, 100' W OF N WASHINGTON ST, C. 300 W LINDEN ST	FLOUR MILL, LANCASTER MILLING COMPANY
44834	SW CORNER OF MADISON AND ELM	

Table 3.3.2 (cont.) City of Lancaster AHI

AHI #	Location	Historic Name
44835	E SIDE OF MADISON ST BETWEEN MAPLE AND CHERRY STS	
44836	SE CORNER OF MADISON AND WALNUT STS	FIRST BAPTIST CHURCH
44837	101 N MADISON ST	WRIGHT HOUSE HOTEL
44840	113 N MADISON ST	WRIGHT HOUSE HOTEL ANNEX
44843	125-129 N MADISON ST	WRIGHT HOUSE HOTEL ANNEX
44844	126 N MADISON ST	C. W. KNAPP BUILDING
44845	144 N MADISON ST	C. J. HYDE & SON AGENCY, RACINE WAGON AND CARRIAGE CO
44847	309 N MADISON ST	C. J. HYDE HOUSE
44851	406 N MADISON ST	W. B. BAXTER HOUSE
44853	428 N MADISON ST	C. H. BAXTER HOUSE
44859	431 N MADISON ST	
44869	443 N MADISON ST	
44872	446 N MADISON ST	C. H. BAXTER HOUSE
44875	511 N MADISON ST	
44876	552 N MADISON ST	
44880	528 N MADISON ST	
44882	729 N MADISON ST	
44884	748 N MADISON ST	R. A. WATKINS HOUSE
44888	748 N MADISON ST	R. A. WATKINS HOUSE
44894	845 N MADISON ST	
44896	859 N MADISON ST	
44898	1017 N MADISON ST	
44902	102 S MADISON ST	RYLAND & HOLLOWAY BUILDING
44911	108 S MADISON ST	STATE BANK OF GRANT COUNTY
44913	114 S MADISON ST	GEORGE GIBBS BUILDING
44915	120 S MADISON ST	JOSEPH NATHAN BUILDING
44916	122 S MADISON ST	THOMAS & ORR BUILDING
44917	126-132 S MADISON ST	M. M. ZIEGLER DOUBLE BLOCK
44918	138 S MADISON ST	JEIDE & CARTHEW BLOCK
44931	144 S MADISON ST	GEORGE P. GOBLE, FURNITURE AND UNDERTAKING
44932	150 S MADISON ST	MASONIC LODGE HALL
44933	152 S MADISON ST	A. J. SCHMIDT BUILDING
44936	237 S MADISON ST	
44937	350 S MADISON ST	GERMAN EVANGELICAL CHURCH
44939	351 S MADISON ST	JOHN H. HOWE HOUSE
44940	402 S MADISON ST	RICHARD MEYER, JR., HOUSE
44941	539 S MADISON ST	
44942	611 S MADISON ST	
44943	834 S MADISON ST	
44944	900 S MADISON ST	MARTIN OSWALD HOUSE
44945	939 S MADISON ST	
44946	1044 S MADISON ST	
44947	1138 S MADISON ST	J. E. MCKINNEY HOUSE
44948	206-218 MADISON ST	LANCASTER MUNICIPAL BUILDING
44952	112-114 E MAPLE ST	JOHN CRABTREE BUILDING
44957	120 E MAPLE ST	NATHAN & WOOLSTENHOLM BUILDING
44963	129 E MAPLE ST	FARMERS TELEPHONE COMPANY BUILDING
44968	132 E MAPLE ST	NATHAN SCHREINER AND CO. BUILDING
44977	134 E MAPLE ST	STEPHEN JOHNSON BUILDING
44993	135 E MAPLE ST	WASHINGTON BARLOW BLOCK
45001	151 E MAPLE ST	JONATHAN PHILLIPS BUILDING
45006	142 E MAPLE ST	W. B. BAXTER BUILDING
45010	150 E MAPLE ST	HENKEL & WENZEL BUILDING
45013	208 E MAPLE ST	GERNAL JOHN B. CALLIS HOUSE
45016	240 E MAPLE ST	
45019	301 E MAPLE ST	
45020	333 E MAPLE ST	
45022	347 E MAPLE ST	

Table 3.3.2 (cont.) City of Lancaster AHI

AHI #	Location	Historic Name
45023	349 E MAPLE ST	
45026	523 E MAPLE ST	
45027	105 W MAPLE ST	THOMAS MCDONALD BUILDING
45028	115 W MAPLE ST	STONE & HASSELL BUILDING
45327	131 W MAPLE ST	T. M. BARBER BUILDING
45329	133 W MAPLE ST	IOOF HALL
45331	139-143 W MAPLE ST	W. S. LATHROP-J. J. BENNETT DOUBLE BLOCK
45334	151 W MAPLE ST	FIRST NATIONAL BANK OF LANCASTER
45337	201 W MAPLE ST	JOHN G. CLARK BLOCK
45338	205 W MAPLE ST	LOUIS ALT BUILDING
45339	219 W MAPLE ST	REED'S OPERA HOUSE
45340	227 W MAPLE ST	GEORGE REYNOLDS BUILDING
45342	236 W MAPLE ST	LANCASTER POST OFFICE
45348	237 W MAPLE ST	
45350	425 W MAPLE ST	EMMA SCHREINER HOUSE FRANK AND IRENE SCHREINER HOUSE
45352	445 W MAPLE ST	
45354	543 W MAPLE ST	
45357	607 W MAPLE ST	
45358	645 W MAPLE ST	
45360	646 W MAPLE ST	W. B. CARTER HOUSE
45362	800 W MAPLE ST	
45363	925 W MAPLE ST	LANCASTER SENIOR HIGH SCHOOL
45364	1016 W MAPLE ST	
45365	1146 W MAPLE ST	
45367	1155 W MAPLE ST	
45368	1300 W MAPLE ST	
45370	241 N MCKINLEY ST	
45372	141 N MONROE ST	
45381	229 N MONROE ST	JOSEPH NATHAN HOUSE
45384	308 N MONROE ST	
45385	450 N MONROE ST	
45387	201 S MONROE ST	
45388	240 S MONROE ST	METHODIST EPISCOPAL CHURCH
45390	253 S MONROE ST	WOOLSTENHOLME HOUSE
45392	304 S MONROE ST	JOHN OSWALD HOUSE
45395	330 S MONROE ST	S. S. WATTS HOUSE
45398	333 S MONROE ST	
45399	348 S MONROE ST	
45401	351 S MONROE ST	
45407	417 S MONROE ST	
45408	426 S MONROE ST	ERSKINE E. MCCOY HOUSE
45409	440 S MONROE ST	
45412	453 S MONROE ST	
45413	804 S MONROE ST	
45414	306 E OAK ST	T. A. BURR HOUSE
45415	112 W OAK ST	JAMES A. JONES HOUSE
45416	133 W OAK ST	GERMAN PRESBYTERIAN CHURCH
45418	142 W OAK ST	W. M. ZIEGLER HOUSE
45419	204 W OAK ST	
45421	232 W OAK ST	
45424	110 E PINE ST	JOHN HARSHBERGER HOUSE
45426	132 E PINE ST	
45429	244 W PINE ST	
45431	350 W PINE ST	GRAIN WAREHOUSE
45434	427 W PINE ST	
45438	436 W PINE ST	
45440	515 W PINE ST	WILLIAM ZIEGLER HOUSE
45442	548 W PINE ST	
45444	739 W PINE ST	
45445	205 POLK ST	
45447	251 S POLK ST	ST. CLEMENT'S CATHOLIC CHURCH, RECTORY

Table 3.3.2 (cont.) City of Lancaster AHI

AHI #	Location	Historic Name
45450	458 S POLK ST	
45452	502 S POLK ST	
45455	552 S POLK ST	
45458	154 S TAYLOR ST	
45459	217 S TAYLOR ST	
45460	235 S TAYLOR ST	
45461	134 N TYLER ST	
45466	248 N TYLER ST	
45467	336 N TYLER ST	
45469	452 N TYLER ST	
45472	100 S TYLER ST	CHRIST LUTHERAN CHURCH
45473	131 S TYLER ST	
45476	151 S TYLER ST	
45478	216 S TYLER ST	H. E. SCHREINER HOUSE
45481	325 S TYLER ST	
45483	413 S TYLER ST	
45484	447 S TYLER ST	W. CALLOWAY HOUSE
45486	505 S TYLER ST	STRONG HOUSE
45488	524 S TYLER ST	
45492	542 S TYLER ST	
45493	605 S TYLER ST	
45497	619 S TYLER ST	
45498	626 S TYLER ST	
45499	710 S TYLER ST	
45500	101 W WALNUT ST	EMANUEL EPISCOPAL CHURCH HALL
45501	301 W WALNUT ST	
45502	108 N WASHINGTON ST	GRAND CENTRAL HOTEL
45503	210 N WASHINGTON ST	
45504	836 N WASHINGTON ST	
45506	135 S WASHINGTON ST	
45508	326-334 S WASHINGTON ST	
45509	341 S WASHINGTON ST	LANCASTER BOTTLING WORKS
45510	210 W WILLOW ST	
59250	9979 OLD K LN	HARDY GRIMES HOUSE
65731	652 S TYLER ST	
112981	UNKNOWN	J. CHANDLER HOLLOWAY HOUSE
136498	111 S JEFFERSON ST	GRANT COUNTY ADMINISTRATION BUILDING
136499	107 E MAPLE ST	RYLAND & HOLLOWAY BANK BUILDING
136500	111-113 E MAPLE ST	RYLAND & HOLLOWAY COMMERCIAL BUILDING
136538	140 E MAPLE ST	JACOB NATHAN BUILDING
136539	141 E MAPLE ST	JOHN J. WENZEL BUILDING
136540	125 W MAPLE ST	R. B. SHOWALTER BUILDING
136541	CA129 W MAPLE ST	WALKER'S CLOTHING & SHOES ADDITION

3.3.16 STATE AND NATIONAL REGISTER OF HISTORIC PLACES

The State Register is Wisconsin's official listing of state properties determined to be significant to Wisconsin's heritage and is maintained by the Wisconsin Historical Society's Division of Historic Preservation. Both listings include sites, buildings, structures, objects, and districts that are significant in national, state or local history, architecture, archaeology, engineering and culture. Contact the National Park Service or State Historical Society for more information of registration. The National Register is the official national list of American historic properties worthy of preservation, maintained by the National Park Service (U.S. Department of the Interior).

3.3.17 ARCHAEOLOGICAL SITE INVENTORY (ASI)

The Archaeological Site Inventory (ASI) is a collection of archaeological sites, mounds, unmarked cemeteries, marked cemeteries, and cultural sites (at the City level) throughout Wisconsin. The Wisconsin Historical Society's Division of Historic Preservation maintains the inventory. Similar to the AHI, the ASI is not a comprehensive or complete list; it only includes sites reported to the Historical Society. The Historical Society estimates that less than

1% of the state’s archaeological sites have been identified. Contact the Wisconsin Historical Society for more information about the inventory.

Table 3.3.3 lists the archeological sites in the jurisdiction compiled by John H. Broihahn of the Office of State Archeology, Historic Preservation Division of the Wisconsin Historical Society.

Table 3.3.3 City of Lancaster ASI

State Site # /Burial Code #	Site Name	Site Type	Cultural Study Unit
BGT-0102	HILLSIDE CEMETERY	Cemetery/burial	Historic Euro-American
BGT-0151	WESTWOOD EPISCOPALIAN CEMETERY	Cemetery/burial	Historic Euro-American
BGT-0152	UNNAMED CEMETERY	Cemetery/burial	

3.3.18 CULTURAL RESOURCE AGENCIES AND PROGRAMS

WISCONSIN HISTORICAL SOCIETY

The Society serves as the archives of the State of Wisconsin. It collects books, periodicals, maps, manuscripts, relics, newspapers, and audio and graphic materials as they relate to North America. It maintains a museum, library, and research facility in Madison, as well as a statewide system of historic sites, school services, area research centers, administering a broad program of historic preservation and publishing a wide variety of historical materials, both scholarly and popular. The historical society can also provide assistance for various state and federal programs.

WISCONSIN HISTORICAL SOCIETY
Office of Preservation Planning
Division of Historic Preservation
Wisconsin Historical Society
816 State Street
Madison, WI 53706
Phone: 608-264-6500
<http://www.wisconsinhistory.org>

NATIONAL PARK SERVICE

The National Park Service administers the National Register of Historic Places. In addition to honorific recognition, listing in the National Register provides:

- Consideration in planning for Federal, federally licensed, and federally assisted projects,
- Eligibility for certain tax provisions,
- Qualification for Federal grants for historic preservation, when funds are available.

NATIONAL PARK SERVICE
Register of Historic Places
1201 Eye St., NW
8th Floor (MS 2280)
Washington, DC 20005
Phone: 202-354-2213
[http:// www.cr.nps.gov/nr](http://www.cr.nps.gov/nr)

WISCONSIN TRUST FOR HISTORIC PRESERVATION (WTHP)

The WTHP, established in 1986, is a private, non-profit organization dedicated to the preservation of the historical, architectural and archaeological heritage of Wisconsin. The Trust advocates for legislation and policies designed to encourage statewide historic preservation. Examples of some of the programs they initiate are

- **Wisconsin Main Street**
A comprehensive program designed to revitalize downtowns and give new life to historic business districts
- **Heritage Tourism Initiative**
The Heritage Tourism Initiative has helped develop grassroots heritage tourism organizations, encouraging Wisconsin communities to use their unique features to tap into the mushrooming heritage tourism market -- and protect that heritage at the same time.
- **Agricultural Buildings Preservation Initiative**
Inspired by the National Trust's popular Barn Again! program, this initiative provides information and forums to help owners of historic agricultural buildings determine how to maintain and reuse their buildings.

WISCONSIN TRUST FOR HISTORIC PRESERVATION
23 North Pinckney Street,
Suite 330, PO Box 2288,
Madison, WI 53701-2288
Phone: 608-255-0348
[http:// www.wthp.org](http://www.wthp.org)

NATIONAL TRUST FOR HISTORIC PRESERVATION

The National Trust for Historic Preservation is a nonprofit organization with more than 200,000 members. The Trust provides leadership, education and advocacy training to save America's historic places.

NATIONAL TRUST FOR HISTORIC PRESERVATION

**1785 Massachusetts Ave., NW
Washington, DC 20036-2117**

Phone: 202-588-6000

[http:// www.nationaltrust.org](http://www.nationaltrust.org)