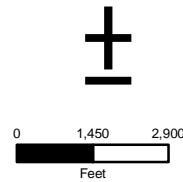
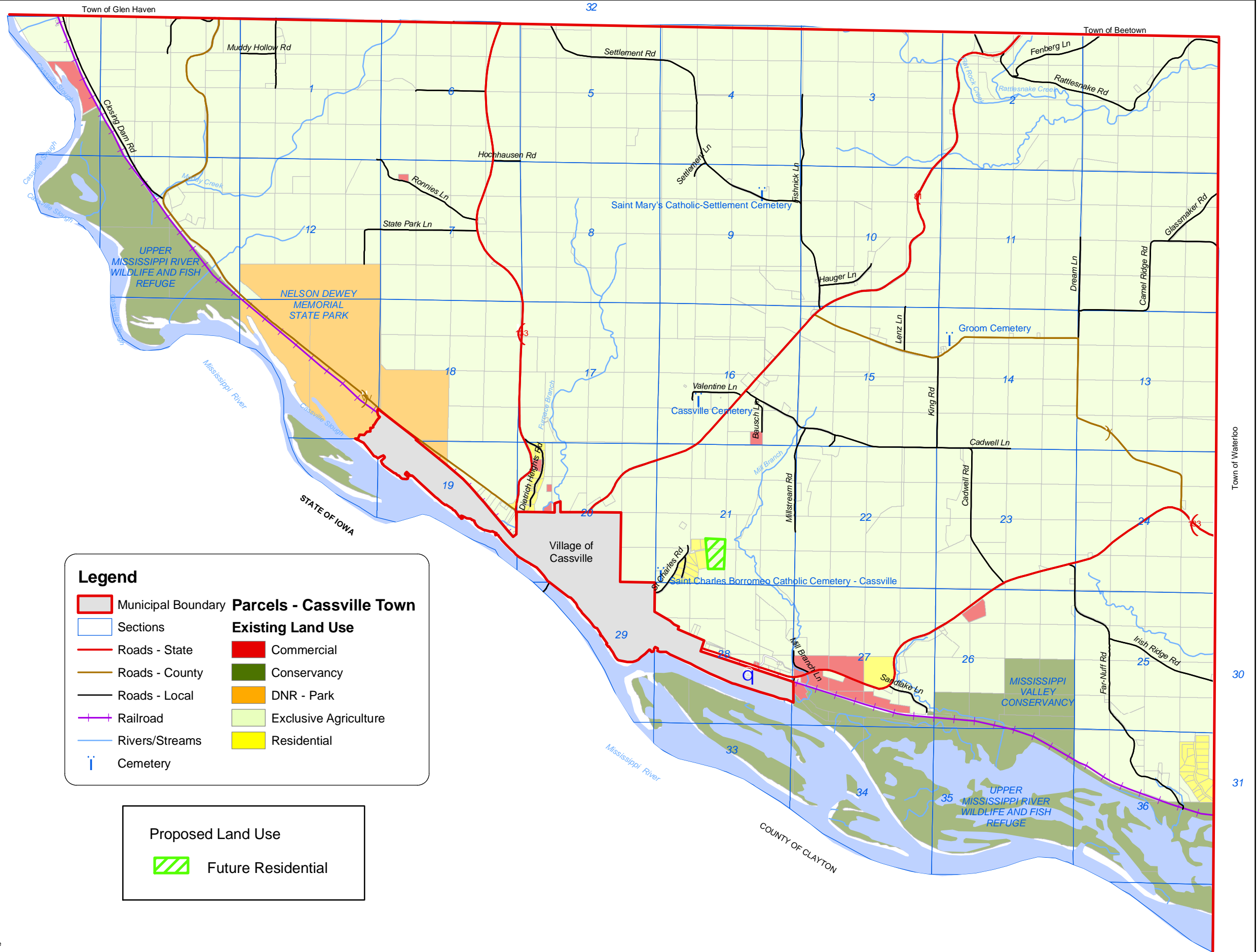


MAP 8.2 PROPOSED LAND USE

- TOWN OF CASSVILLE -
- GRANT COUNTY, WISCONSIN -



This map is neither a legally recorded map nor a technical survey and is not intended to be one. SWWRPC is not responsible for any inaccuracies herein contained.



719 Pioneer Tower
One University Plaza
Platteville, WI 53818
608-342-1214
www.swwrpc.org

February 19, 2009

Parcels: 2008

Legend

- | | |
|--------------------|-----------------------|
| Municipal Boundary | Commercial |
| Sections | Conservancy |
| Roads - State | DNR - Park |
| Roads - County | Exclusive Agriculture |
| Roads - Local | Residential |
| Railroad | |
| Rivers/Streams | |
| Cemetery | |

Proposed Land Use

- | | |
|--|--------------------|
| | Future Residential |
|--|--------------------|