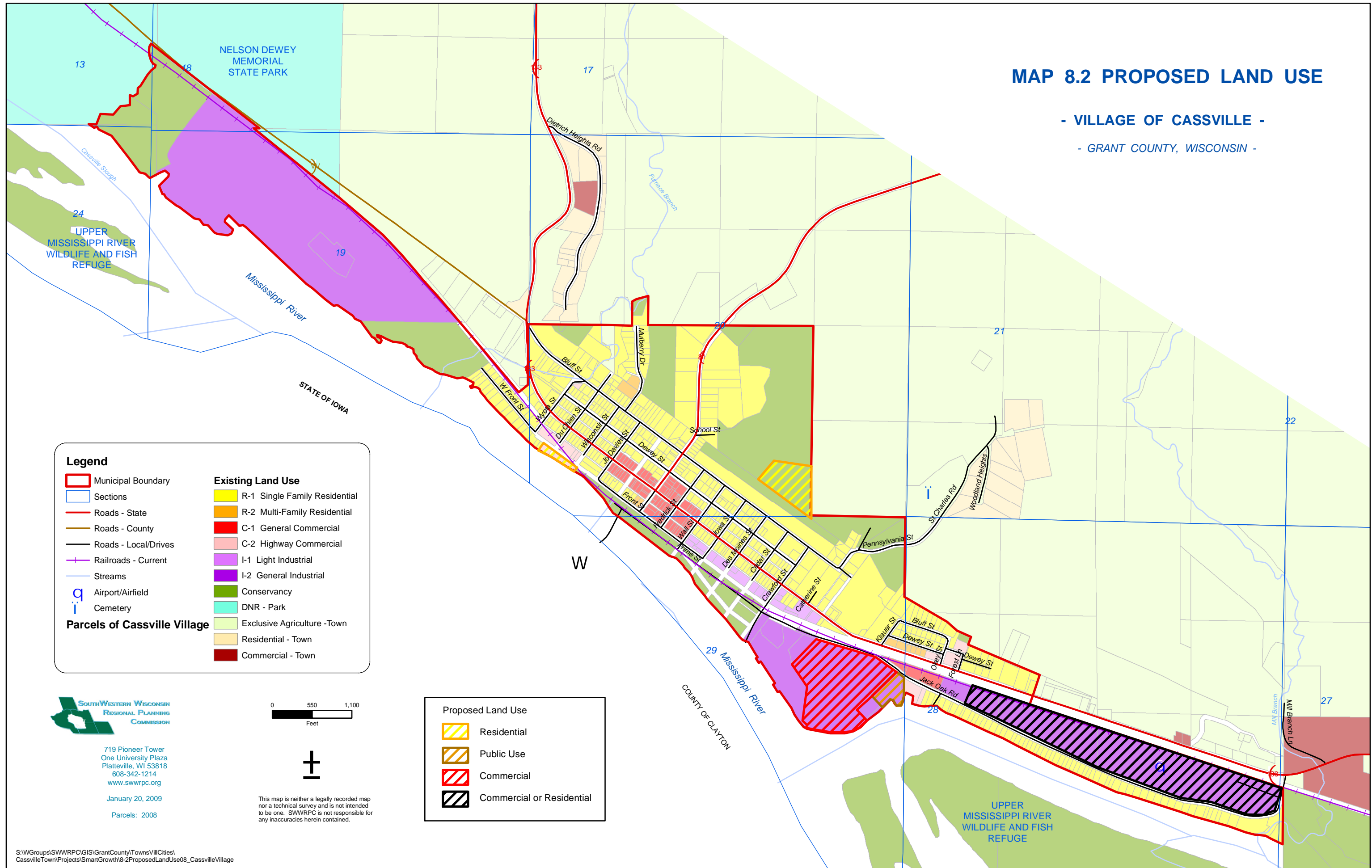


# MAP 8.2 PROPOSED LAND USE

- VILLAGE OF CASSVILLE -

- GRANT COUNTY, WISCONSIN -



### Legend

- |                                     |                               |
|-------------------------------------|-------------------------------|
| Municipal Boundary                  | <b>Existing Land Use</b>      |
| Sections                            | R-1 Single Family Residential |
| Roads - State                       | R-2 Multi-Family Residential  |
| Roads - County                      | C-1 General Commercial        |
| Roads - Local/Drives                | C-2 Highway Commercial        |
| Railroads - Current                 | I-1 Light Industrial          |
| Streams                             | I-2 General Industrial        |
| Airport/Airfield                    | Conservancy                   |
| Cemetery                            | DNR - Park                    |
| <b>Parcels of Cassville Village</b> | Exclusive Agriculture - Town  |
|                                     | Residential - Town            |
|                                     | Commercial - Town             |

### Proposed Land Use

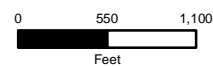
- |  |                           |
|--|---------------------------|
|  | Residential               |
|  | Public Use                |
|  | Commercial                |
|  | Commercial or Residential |



719 Pioneer Tower  
One University Plaza  
Platteville, WI 53818  
608-342-1214  
www.swwrpc.org

January 20, 2009

Parcels: 2008



This map is neither a legally recorded map nor a technical survey and is not intended to be one. SWWRPC is not responsible for any inaccuracies herein contained.