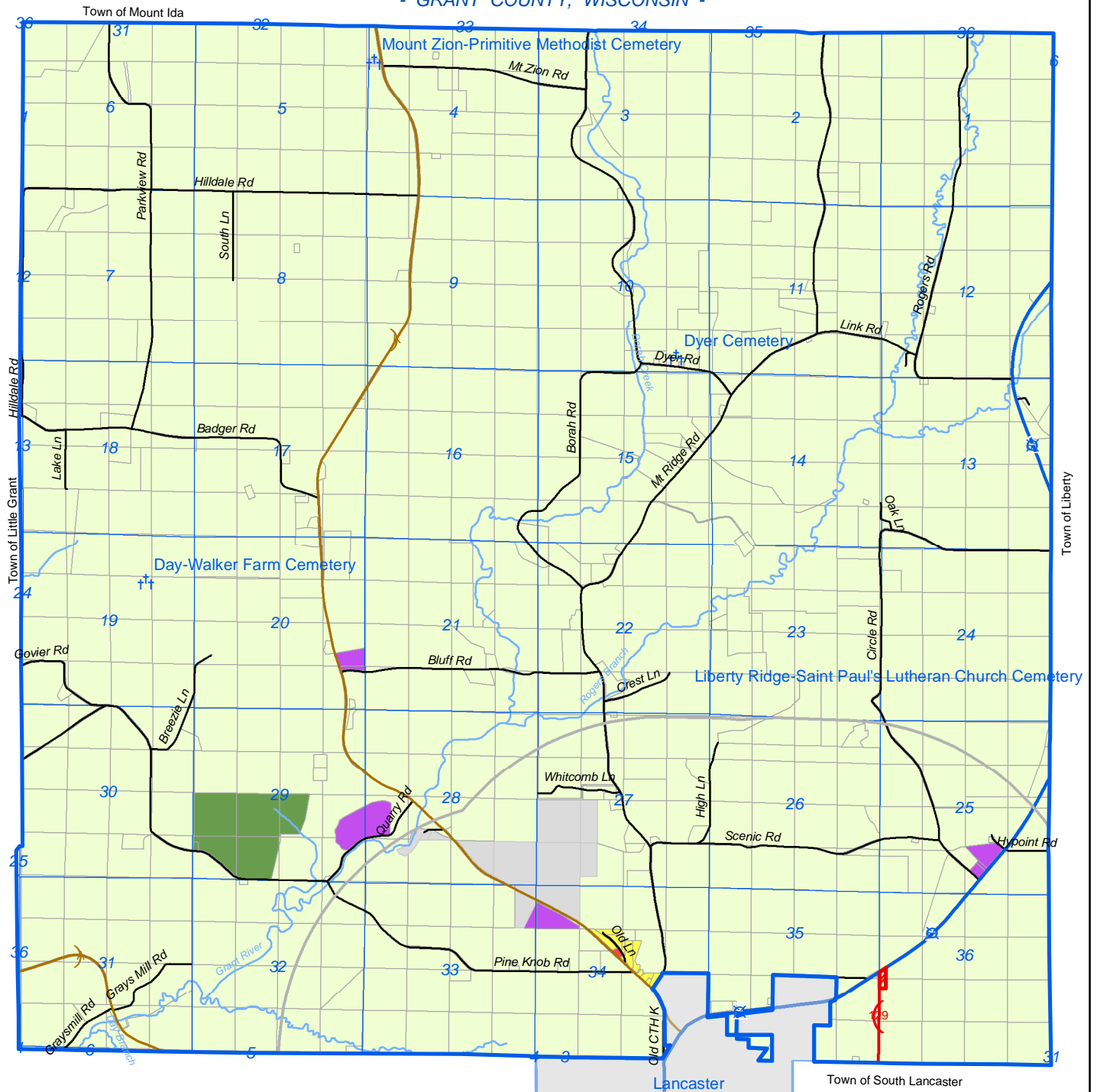


MAP 8.2 PROPOSED LAND USE

- TOWN OF NORTH LANCASTER -

- GRANT COUNTY, WISCONSIN -

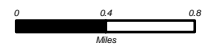


719 Pioneer Tower
One University Plaza
Platteville, WI 53818
608-342-1214
www.swwrpc.org

December 18, 2008
Parcels: 2008

Legend

- | | |
|----------------------|--|
| Municipal Boundary | Parcels of North Lancaster Town |
| Sections | Existing Land Use |
| 1.5 Mile Buffer Zone | Agricultural |
| Roads - Federal | Commercial |
| Roads - State | Conservancy |
| Roads - County | Industrial |
| Roads - Local | Municipal |
| Streams | Residential |



This map is neither a legally recorded map nor a technical survey and is not intended to be one. SWWRPC is not responsible for any inaccuracies herein contained.

Proposed Development

- | | |
|--|-------------------------------|
| | Future Commercial Development |
|--|-------------------------------|