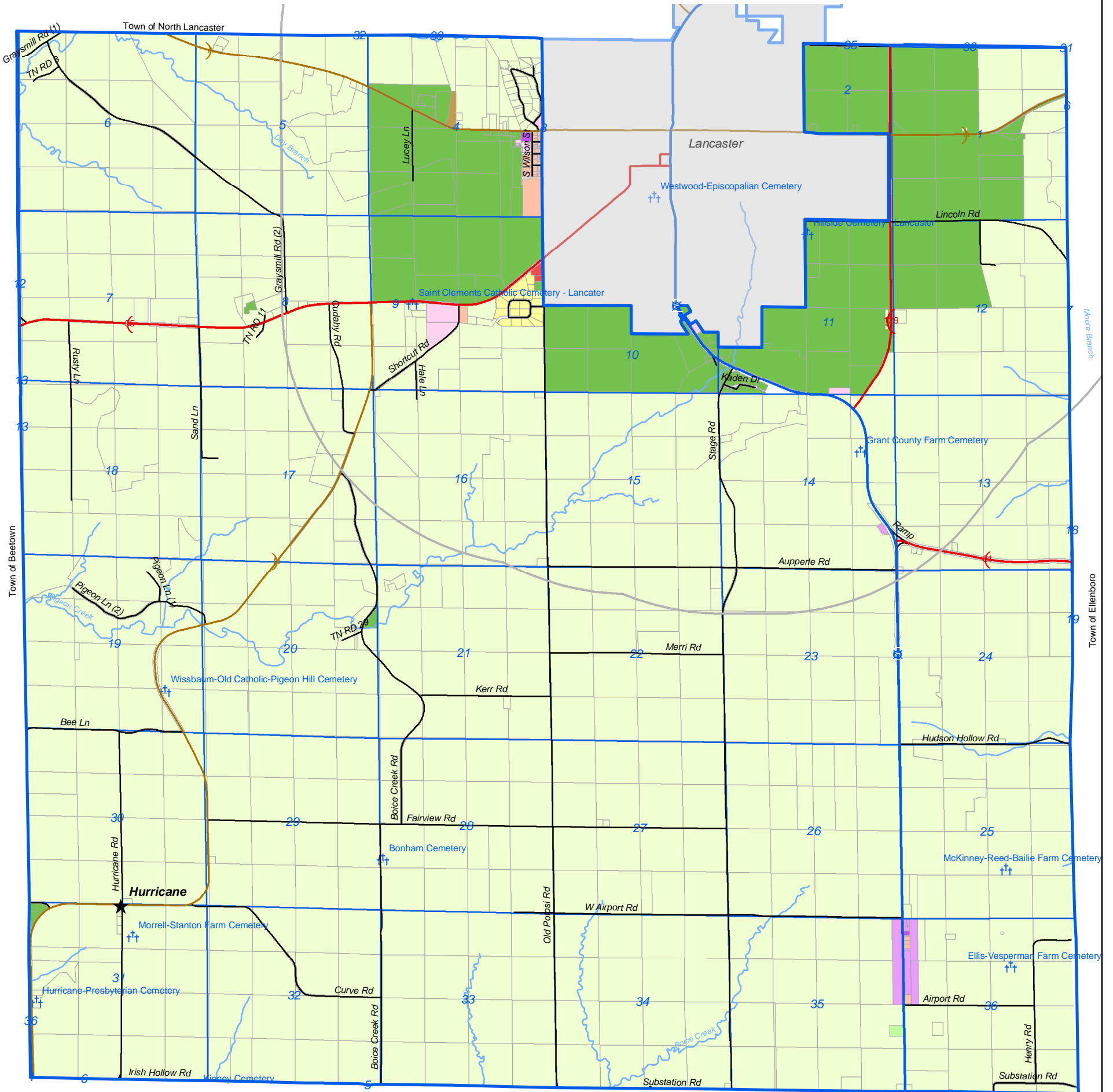


MAP 8.2 PROPOSED LAND USE

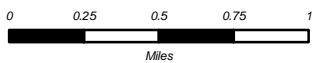
- TOWN OF SOUTH LANCASTER -

- GRANT COUNTY, WISCONSIN -



719 Pioneer Tower
One University Plaza
Platteville, WI 53818
608-342-1214
www.swwrpc.org

October 23, 2008
Parcels: 2008



This map is neither a legally recorded map nor a technical survey and is not intended to be one. SWWRPC is not responsible for any inaccuracies herein contained.

Legend

- Municipal Boundary
- 1.5 Mile ETZ Buffer Zone
- Sections
- Unincorporated Villages
- Roads - Federal
- Roads - State
- Roads - County
- Roads - Local
- Streams
- Cemetery

Parcels of South Lancaster Town

Proposed Land Use

- Exclusive Agricultural District
- Agricultural District - Limited Res.
- Agricultural District - Transitional
- Single-Family Residential District
- Two-Family Residential District
- Multi-Family Residential District
- Commercial District
- Commercial District - Highway
- Light Industrial District
- Heavy Industrial District