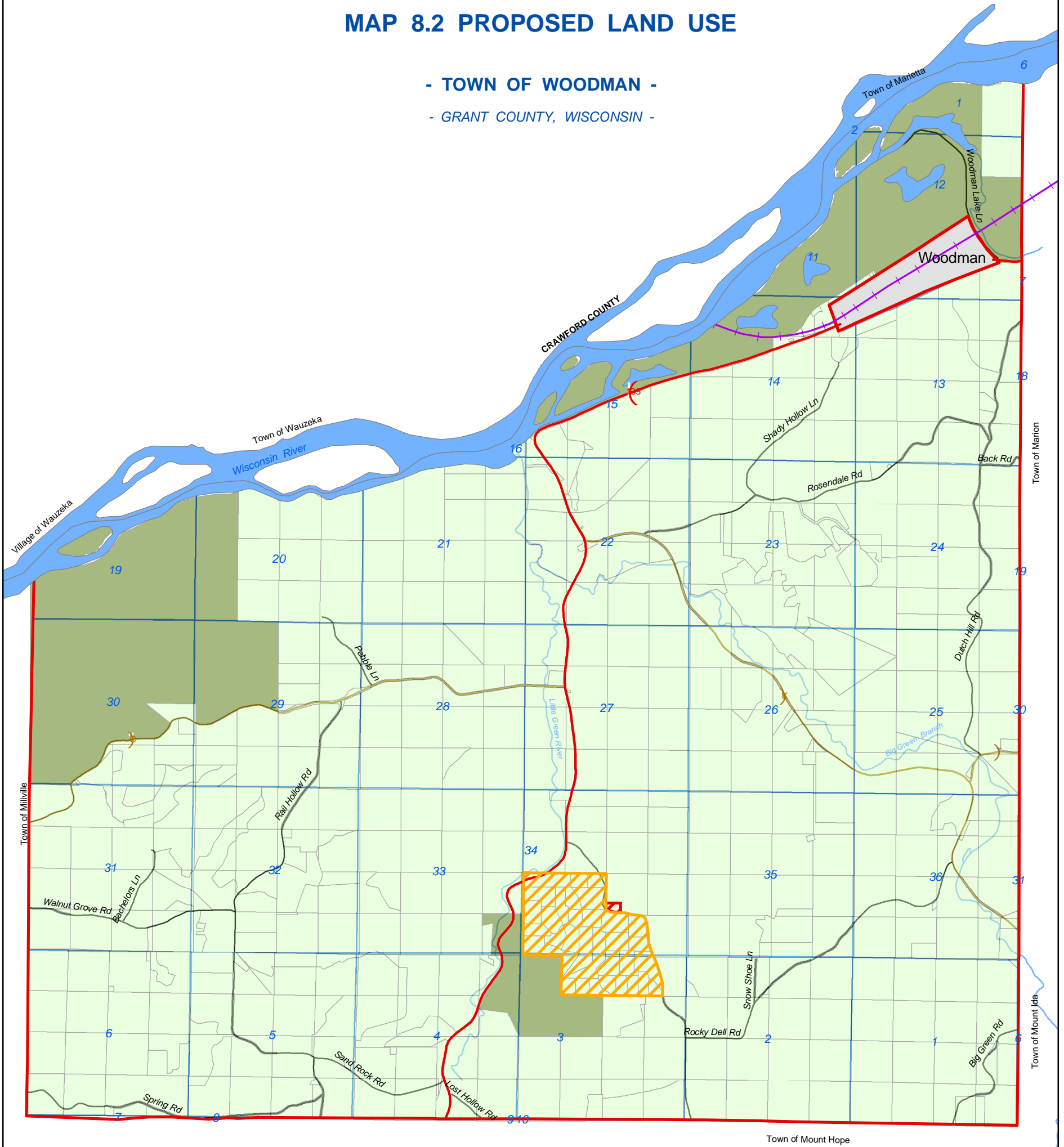


MAP 8.2 PROPOSED LAND USE

- TOWN OF WOODMAN -
- GRANT COUNTY, WISCONSIN -

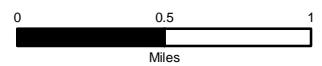


Legend

- Municipal Boundary
- Sections
- Roads - State
- Roads - County
- Roads - Local Drives/Streets
- Railroad
- Rivers/Streams
- Parcels - Town of Woodman**
- Existing Land Use**
- Township - Agricultural
- WI DNR

Proposed Land Use

- Future Residential
- Future Commercial



This map is neither a legally recorded map nor a technical survey and is not intended to be one. SWWRPC is not responsible for any inaccuracies herein contained.



719 Pioneer Tower
One University Plaza
Platteville, WI 53818
608-342-1214
www.swwrpc.org

February 11, 2009
Parcels: Grant Co. - 2008