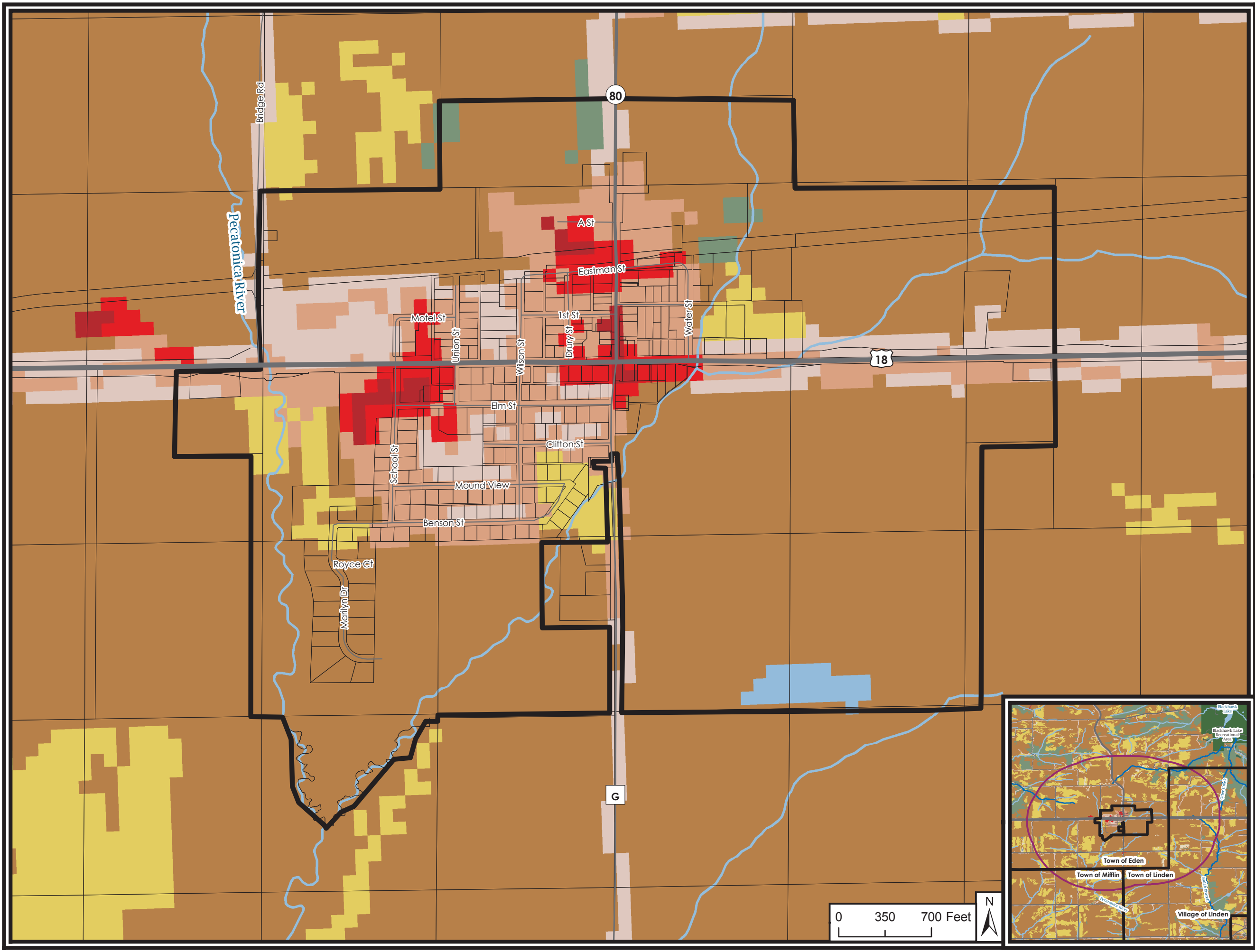


Map 3.2.5 Natural Corridors and Recreational Resources
Village of Cobb
 Iowa County, Wisconsin



- Open Water
- Developed Open Space
- Developed Low Intensity
- Developed Medium Intensity
- Developed High Intensity
- Barren
- Deciduous Forest
- Evergreen Forest
- Mixed Forest
- Shrub Area
- Grassland
- Pasture/Hay
- Cultivated Crop
- Woody Wetland
- Emergent Wetland
- No Data

- Trout Stream Classification**
- Cold - Class I Trout
 - Cold - Class II Trout
 - Class III Trout
 - River or Stream

- Local Road
- County Highway
- State Highway
- Federal Highway

- Parcel
- Village Boundary
- Township Boundary
- 1.5 Mile Buffer
- WI DNR Managed Land



Southwestern Wisconsin Regional Planning Commission
 719 Pioneer Tower
 One University Plaza
 Platteville, WI 53818
 608-342-1214
 www.swwrpc.org

This map is neither a legally recorded map nor a technical survey and is not intended to be one. SWWRPC is not responsible for any inaccuracies herein contained.

Sources: USDA, WI DNR, WI DOT, Iowa County, SWWRPC Inventory

DRAFT November 10, 2009