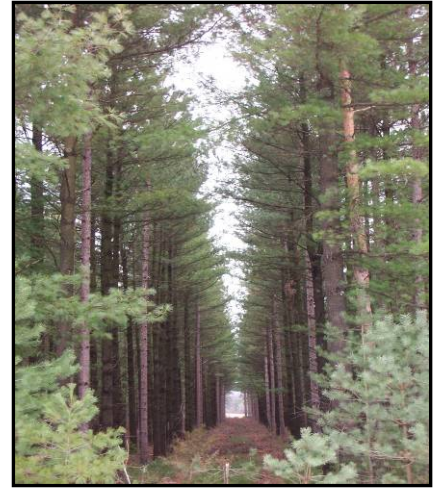




# Iowa County Comprehensive Plan



# IOWA COUNTY, WISCONSIN COMPREHENSIVE PLAN

## IOWA COUNTY BOARD

<b>District 1</b>	Stephen Foye	<b>District 12</b>	Dana Perry
<b>District 2</b>	Phil Roberts	<b>District 13</b>	Jacob (Bill) Ehr
<b>District 3</b>	Diane McGuire	<b>District 14</b>	Dale Theobald
<b>District 4</b>	Curt Peterson	<b>District 15</b>	Joe Thomas
<b>District 5</b>	Jerome Laufenberg	<b>District 16</b>	Larry Steffes
<b>District 6</b>	James Murn	<b>District 17</b>	Robert Regan
<b>District 7</b>	John Lind	<b>District 18</b>	David Meudt
<b>District 8</b>	Dahlman (Ted) Van Epps	<b>District 19</b>	LaVerne Clifton
<b>District 9</b>	Charles Anderson	<b>District 20</b>	Mark Masters
<b>District 10</b>	Eric Anderson	<b>District 21</b>	Ken Wunderlin
<b>District 11</b>	Peter Berg		

## IOWA COUNTY PLAN COMMISSION

Jacob Ehr, Chair  
Diane McGuire  
Curt Peterson  
John Lind  
Dale Theobald

## **Southwestern Wisconsin Regional Planning Commission Staff**

Edward Bible, Economic Development Planner  
Andrew Bremer, Associate Planner/GIS Manager  
Glenda Dye, Office Manager/Bookkeeper  
Joni Graves, Transportation Planner  
Amy Knox, Project Manager  
Ron Niemann, Project Planner  
Mary Jenkins Penn, Local Assistance Planner  
Joyel Rounds, Administrative Assistant  
Lawrence T. Ward, Executive Director  
Darlene Wilson, Cartographer

**Planning Report No. 05/188**

**April 2005**

**TABLE OF CONTENTS**

	Page
<b>Section A: Issues and Opportunities</b>	
Executive Summary.....	A-1
Issues and Opportunities Policies .....	A-2
Background .....	A-2
Community Involvement .....	A-2
Demographic Trends .....	A-8
Demographic Projections .....	A-12
<b>Section B: Housing</b>	
Executive Summary .....	B-1
Housing Policies .....	B-2
Iowa County Housing Impact Concerns .....	B-4
Housing Characteristics .....	B-6
Affordable Housing .....	B-7
Future Residential Development Locations .....	B-10
Iowa County Housing Characteristics .....	B-10
Housing Agencies and Programs .....	B-14
<b>Section C: Transportation</b>	
Executive Summary.....	C-1
Iowa County Transportation Policy Summary .....	C-2
Transportation History in the Region.....	C-2
Economic Development Overview .....	C-5
Transportation Issues & Modes .....	C-7
Traffic Volume & Safety .....	C-8
Commuting .....	C-10
Transit .....	C-12
Transportation and Agriculture Uses .....	C-13
Shipping .....	C-15
Air Transportation .....	C-16
Rail Freight .....	C-17
Bicycle Trails & Road Improvements .....	C-18
Water Transport .....	C-19
Information for Local Jurisdictions .....	C-19
<b>Section D: Utility and Community Facilities</b>	
Executive Summary .....	D-1
Utilities and Community Facilities Policies .....	D-2
Water Systems .....	D-6
Wastewater Treatment .....	D-7
Stormwater Management .....	D-8
Special Purpose Districts .....	D-9
Community Facilities and Services .....	D-9
Utility and Community Agencies and Programs .....	D-19
<b>Section E: Agricultural, Natural, and Cultural Resources</b>	
Executive Summary .....	E-1
Agricultural, Natural, and Cultural Resources Policies .....	E-2
Agricultural Resources .....	E-5
Farmland Potential .....	E-18
Land Cover .....	E-18
Air and Light .....	E-35
Geologic and Soil Resources .....	E-36
Parks and Open Space .....	E-37
Cultural and Historic Resources .....	E-41
Agricultural, Natural, and Cultural Resource Agencies and Programs .....	E-48

Table of Contents

<b>Section F: Economic Development</b>	
Executive Summary .....	F-1
Introduction .....	F-2
Economic Development Policies .....	F-4
Establishing Priorities .....	F-5
Northwest Cluster .....	F-7
Northeast Cluster .....	F-8
Central Cluster .....	F-8
Southwest Cluster .....	F-8
South Central Cluster .....	F-8
Southeast Cluster .....	F-8
Labor Force Characteristics .....	F-10
Conclusion .....	F-29
Financing opportunities for businesses, and for organizations that provide assistance to business .....	F-30
<b>Section G: Intergovernmental Cooperation</b>	
Executive Summary .....	G-1
Intergovernmental Cooperation Policies .....	G-2
Intergovernmental Relationships .....	G-2
Intergovernmental Conflicts .....	G-10
Other Intergovernmental Concerns .....	G-12
Possible Future Cooperation Efforts .....	G-13
Communication With Neighbors .....	G-14
Formal Agreements With Neighboring Jurisdictions .....	G-16
Steps to Beginning Successful Intergovernmental Cooperation Efforts .....	G-18
<b>Section H: Land Use</b>	
Executive Summary .....	H-1
Town Land Use Policies .....	H-2
City/Village Land Use Policies .....	H-12
Existing Land Use .....	H-13
Land Use Trends – Participating Iowa County Jurisdictions .....	H-14
Redevelopment Opportunities .....	H-23
Existence of Brownfields or Properties Suitable for Redevelopment .....	H-23
Existing and Potential Land Use Conflicts .....	H-29
Integrated Land Use .....	H-29
Future Land Use .....	H-29
<b>Section I: Implementation</b>	
Executive Summary .....	I-1
Implementation Policies .....	I-2
Consistency Among Plan Elements .....	I-2
Plan Adoption .....	I-2
Local Ordinances and Regulations .....	I-2
Plan Amendments .....	I-2
Plan Updates .....	I-2
County and Town Rural Residential Siting Criteria .....	I-3
County and Town Commercial Siting Criteria .....	I-10
Implementation Measures .....	I-20
<b>Appendix A: Issues and Opportunities</b>	
Opinion Survey Summary .....	Appendix A-1
Cluster Visioning.....	Appendix A-2
Public Participation Plan .....	Appendix A-3
<b>Appendix B: Housing</b>	
None	

**Appendix C: Transportation**

Transportation and the Environment ..... Appendix C-1  
WisDOT: Rustic Roads ..... Appendix C-2  
City and Village Development Scenarios ..... Appendix C-3  
Rural Development Scenarios ..... Appendix C-3  
WAPA: Significant Changes made in Rules of the WisDOT for Land Divisions Abutting  
State Highways ..... Appendix C-4  
WisDOT: Access management-balancing traffic flow and highway access ..... Appendix C-5  
Local Roads Improvement Program (LRIP) ..... Appendix C-6  
Capital Improvement Programs (Part I, II & III) ..... Appendix C-7

**Appendix D: Utility and Community Facilities**

None

**Appendix E: Agricultural, Natural, and Cultural Resources**

Rare, Threatened, or Endangered Natural Community Types ..... Appendix E-1  
Special Concern, Threatened, and Endangered Species ..... Appendix E-2  
Churches ..... Appendix E-3  
Cemeteries ..... Appendix E-4  
Rural One-Room Schoolhouses ..... Appendix E-5  
Culturally Important Buildings/Sites ..... Appendix E-6  
Archeological Sites ..... Appendix E-7

**Appendix F: Economic Development**

None

**Appendix G: Intergovernmental Cooperation**

None

**Appendix H: Land Use**

None

**Appendix I: Implementation**

None

## LIST OF FIGURES

Figure	Title	Page
<b>Section A Issues and Opportunities</b>		
A.1	Iowa County 30 Year Population Changes	A-8
A.2	Iowa County Age Distribution in 2000	A-8
A.3	Percent Population Comparison for Iowa County and the State of Wisconsin	A-9
A.4	Iowa County Housing Changes	A-9
A.5	Iowa County Total Households by Category	A-10
A.6	Iowa County Population Projections	A-12
A.7	Iowa County Household Projections	A-12
A.8	Iowa County Labor Force Projections	A-13
<b>Section B Housing</b>		
B.1	Iowa County Total Housing Units	B-10
B.2	Iowa County Total Households by Category	B-10
B.3	Iowa County Housing Unit Types	B-11
B.4	Iowa County Year Structure Built	B-11
B.5	Iowa County Value of Owner Occupied Units	B-12
B.6	Iowa County Monthly Owner Costs: % of 1999 Household Income	B-12
B.7	Iowa County Gross Rent for Renter Occupied Units	B-13
B.8	Iowa County Gross Rent: % Household Income in 1999	B-13
<b>Section C Transportation</b>		
<i>No Figures for this Section</i>		
<b>Section D Utility and Community Facilities</b>		
<i>No Figures for this Section</i>		
<b>Section E Agricultural, Natural, and Cultural Resources</b>		
E.1	Farms in Iowa County, WI	E-16
E.2	Land in Farms – Iowa County, WI	E-16
E.3	Farmland Sales & Conversion	E-17
E.4	Average Value of Sale	E-17
E.5	Farms vs Dairy Farms (per Sq/Mi)	E-18
<b>Section F Economic Development</b>		
<i>No Figures for this Section</i>		
<b>Section G Intergovernmental Cooperation</b>		
<i>No Figures for this Section</i>		
<b>Section H Land Use</b>		
<i>No Figures for this Section</i>		
<b>Section I Implementation</b>		
<i>No Figures for this Section</i>		

## LIST OF MAPS

Map	Title
<b>Section A Issues and Opportunities</b>	
<i>No Maps for this Section</i>	
<b>Section B Housing</b>	
<i>No Maps for this Section</i>	
<b>Section C Transportation</b>	
<i>No Maps for this Section</i>	
<b>Section D Utility and Community Facilities</b>	
D.1	Utilities and Facilities – Iowa County
D.2	Iowa County School Districts
D.3	Southwestern Wisconsin Hospitals and Medical Clinics
<b>Section E Agricultural, Natural, and Cultural Resources</b>	
E.1	Soil Classifications
E.2	Land Cover
E.3	Surface Water Resources
E.4	Iowa County River Basins and Watersheds
E.5	FEMA Floodplain
E.6	Depth to Water Table
E.7a	Threatened & Endangered Aquatic & Terrestrial Species and/or Natural Communities
E.7b	Threatened & Endangered Plants and Natural Communities
E.8	Natural Resources and Environmental Corridors
E.9	Slope Limitations
E.10	Septic Limitations
E.11	Depth to Bedrock
E.12	Mines and Quarries
E.13	Iowa County Recreational Trails and Parks
E.14	Rural School Locations
E.15	Cemetery and Church Locations
E.16	Historic Places
<b>Section F Economic Development</b>	
<i>No Maps for this Section</i>	
<b>Section G Intergovernmental Cooperation</b>	
<i>No Maps for this Section</i>	
<b>Section H Land Use</b>	
H.1	Land Use – Iowa County All Towns within Iowa County
<b>Section I Implementation</b>	
<i>No Maps for this Section</i>	

*\*If Sections have Maps, they are located at the end of the Section*

## LIST OF TABLES

Table	Title	Page
<b>Section A Issues and Opportunities Element</b>		
A.1	Educational Attainment of Residents 25 Years and Older	A-10
A.2	Income Comparisons	A-11
A.3	Occupation Characteristics	A-11
<b>Section B Housing Element</b>		
B.1	Housing Policies	B-2
B.2	Housing Concerns and Comments	B-4
B.3	Desired Housing Types	B-6
B.4	Housing Location Preferences	B-7
B.5	Affordable Housing	B-8
B.6	Comparison of Owner Occupied Median Home Values – 1990 & 2000	B-8
B.7	Comparison of Renter Occupied Median Rent Paid – 1990 & 2000	B-9
B.8	Iowa County Housing Program Preferences	B-14
<b>Section C Transportation Element</b>		
Tables throughout chapter		
<b>Section D Utility and Community Facilities Element</b>		
D.1	Utility and Community Facility Policies	D-2
D.2	Other Important Community Facilities	D-5
D.3	Iowa County Communities with Municipal Wells	D-6
D.4	Iowa County Communities with Private Wells	D-7
D.5	Iowa County Communities with Wastewater Treatment Facilities	D-7
D.6	Iowa County Communities with Private Septic Systems	D-8
D.7	Stormwater Systems	D-8
D.8	Special Purpose Districts	D-9
D.9	Police and Fire Protection and Emergency Services	D-9
D.10	Municipal Buildings of Iowa County Jurisdictions	D-10
D.11	Childcare Facilities	D-11
D.12	Iowa County Public School Enrollment	D-12
D.13	Higher Education Facilities	D-12
D.14	Local Health Care Facilities	D-13
D.15	Solid Waste Disposal & Recycling Programs	D-14
D.16	Recreational Amenities	D-14
D.17	Natural Resources Promotion	D-16
D.18	Parks and Recreational Space Needs Assessment	D-17
D.19	Iowa County Telecommunication Towers	D-18
<b>Section E Agricultural, Natural, and Cultural Resources Element</b>		
E.1	Agricultural, Natural, and Cultural Resource Policies	E-2
E.2	Farming Conflicts	E-5
E.3	Farm Expansion Concerns	E-6
E.4	Ways to Encourage Young People to Farm	E-8
E.5	Farming Infrastructure	E-10
E.6	Single Enterprise Farm Type Desirability	E-11
E.7	Multi-Enterprise Farm Type Desirability	E-11
E.8	Farm Types to Encourage Over Next 20 Years	E-12
E.9	Farmers Retirement Needs vs. Community Goals and Vision	E-13
E.10	Maintaining Current Farm Operations and Community Vision	E-15
E.11	Maintaining Agriculture in General and Community Vision	E-15
E.12	Non-Point Source Pollution Protection Strategies	E-19
E.13	Flooding Risk and Flood Prevention Strategies	E-20

<b>Section E Agricultural, Natural, and Cultural Resources Element (cont.)</b>		
E.14	Wells, Potential Groundwater Contaminants, Wellhead Protection Plans: Towns	E-22
E.15	Wells, Potential Groundwater Contaminants, Wellhead Protection Plans: Cities/Villages	E-23
E.16	Water Resource Protection Strategies	E-23
E.17	Groundwater Demand	E-25
E.18	Natural Community Protection	E-27
E.19	Prairie and Oak Savanna Restoration/Protection	E-27
E.20	Wildlife Habitat Protection	E-28
E.21	Agriculture and Wildlife Habitat Protection	E-29
E.22	Noxious Weed and Invasive Plant Controls	E-31
E.23	Sustainable Forestry	E-33
E.24	Air and Light Pollution	E-34
E.25	Mine Shafts and Quarries	E-36
E.26	Recreational Amenities	E-37
E.27	Natural Resources Promotion	E-38
E.28	Parks and Recreational Space Needs Assessment	E-39
E.29	State and National Registered Historic Places – Towns	E-40
E.30	State and National Registered Historic Places – Cities/Villages	E-40
E.31	Cultural Resources, Programs, and Special Events	E-41
E.32	Important Cultural Resources, Threats, and Protection	E-42
E.33	Local Cultural Resource Contacts	E-45
E.34	Historic Preservation Ordinances	E-46
<b>Section F Economic Development Element</b>		
F.1	Strengths/Opportunities and Weakness/Threats Relationships	F-7
F.2	Employment Status and Commuting to Work: 2000	F-10
F.3	Occupation of Employed Civilians 16 Years and Over: 2000	F-11
F.4	Industry and Class of Worker of Employed Civilians 16 Years and Over: 2000	F-12
F.5	Labor Force Participation Rates By Age Group for Minor Civil Divisions	F-13
F.6	Age-Specific Labor Force Participation Rates for Comparison	F-16
F.7	Work Status in 1999 by Weeks & Hours Usually Worked, by Sex	F-16
F.8	Employment Status for Iowa County, Wisconsin: 2000	F-17
F.9	Income Characteristics for Iowa County, Wisconsin: 2000	F-18
F.10	Income and Poverty Characteristics for County Subdivisions: 1999	F-19
F.11	Sex of Worker by Industry and Class for the Employed Civilian Population 16 Years and Over	F-21
F.12	Sex of Employed Civilian Population 16 Years and Over by Industry: 2000	F-21
F.13	Iowa County Labor Force Projections	F-22
F.14	Number of Establishments	F-23
F.15	Change in Total Employment and Number of Establishments by Employment-Size Classes, 1998-2001	F-24
F.16	Change in the Number of Establishments, Payroll, and Employees by Zip Code: 1998-2001	F-25
F.17	Change in the Number of Establishments of Non-employers: 1997-2000	F-26
F.18	List of Major Employers with 20+ Employees in Iowa County and Avoca	F-27

<b>Section G Intergovernmental Cooperation Element</b>		
G.1	Iowa County Intergovernmental Relationship Ratings	G-2
G.2	Existing Area of Cooperation Between Iowa County Jurisdictions	G-7
G.3	Iowa County Intergovernmental Conflicts	G-10
G.4	Other Intergovernmental Concerns for Iowa County Jurisdictions	G-12
G.5	Possible Future Cooperation Efforts for Iowa County Jurisdictions	G-13
G.6	Iowa County Intergovernmental Communication	G-14
G.7	Iowa County Intergovernmental Jurisdiction Formal Agreements	G-16
<b>Section H Land Use Element</b>		
H.1a – H.1m	Town Land Use Policies	H-2
H.2	City and Village Land Use Policies	H-16
H.3	Iowa County Land Use	H-17
H.4a – H.4v	Land Use Trends – Iowa County Jurisdictions	H-18
H.5	Iowa County Single Family Housing Unit Change	H-23
H.6a – H.6v	Land Use Projections – Iowa County Jurisdictions	H-23
<b>Section I Implementation Element</b>		
I.1a – I.1n	County and Town Rural Residential Siting Criteria	I-3
I.2a – I.2n	County and Town Commercial Siting Criteria	I-11