

EXECUTIVE SUMMARY

The purpose of this section is to provide basic background information for the comprehensive planning process and general population and demographic characteristics for the Village of Linden. More specifically this section includes information from the community survey and visioning sessions, demographic trends including population trends, age distribution, housing trends, education levels, income levels, employment characteristics, population projections, housing projections, and labor force projections.

**Wisconsin State Statute 66.1001(2)(a)****(a) *Issues and opportunities element.***

Background information on the local governmental unit and a statement of overall objectives, policies, goals and programs of the local governmental unit to guide the future development and redevelopment of the local governmental unit over a 20-year planning period. Background information shall include population, household and employment forecasts that the local governmental unit uses in developing its comprehensive plan, and demographic trends, age distribution, educational levels, income levels and employment characteristics that exist within the local governmental unit.

ISSUES AND OPPORTUNITIES POLICIES

The following are the issues and opportunities policies for the Village of Linden. The essence of these recommendations is carried out throughout the entire document.

- **Protect and improve the health, safety, and welfare of residents in the Village of Linden.**
- **Preserve and enhance the quality of life for the residents of the Village of Linden.**
- **Protect and preserve the small community character of the Village of Linden.**

Note: The above policy recommendations are further explained in other elements of this comprehensive plan. This section provides background information and overall direction. For example, the above recommendations may be carried out by implementing recommendations in other sections such as housing, economic development, and transportation.

BACKGROUND

Iowa County, together with twenty-two jurisdictions, including the Village of Linden, applied for a Comprehensive Planning Grant through the Wisconsin Department of Administration in the fall of 2001. In the spring of 2002, the Comprehensive Planning Grant was awarded. Iowa County and the jurisdictions within it contracted with the Southwestern Wisconsin Regional Planning Commission (SWWRPC) to complete individual comprehensive plans for each of the twenty-three jurisdictions (Iowa County, cities, towns, and villages) in accordance with Wisconsin Statutes 66.1001.

Because of the large number of jurisdictions involved and in an effort to streamline planning meetings, individual jurisdictions were grouped into “clusters”, based on their physical proximity to one another, resulting in six cluster groups listed below. Iowa County was a separate cluster.

- “Northwest Cluster” (Towns of Highland and Pulaski, Villages of Avoca and Highland)
- “Northeast Cluster” (Towns of Arena, Clyde, and Wyoming, and the Village of Arena)
- “Central Cluster” (Towns of Dodgeville and Ridgeway, Village of Ridgeway, and City of Dodgeville)
- “Southwest Cluster” (Towns of Eden, Linden and Mifflin, and Village of Linden)
- “South Central Cluster” (Towns of Mineral Point and Waldwick, and City of Mineral Point)
- “Southeast Cluster” (Town of Moscow, and Villages of Blanchardville and Hollandale)
- Iowa County

COMMUNITY INVOLVEMENT

COMMUNITY SURVEY

In September and October of 2002, the staff from SWWRPC and University of Wisconsin Extension Service-Iowa County (UWEX-Iowa County) developed a countywide survey that was distributed to all property owners in Iowa County. A total of 10,752 surveys were sent out, 226 to Village of Linden property owners. Fifty-four surveys were sent back, giving the village a 24 percent return rate. (See Appendix A-1 for complete survey results.)

COMMUNITY VISION

A vision statement identifies where an organization intends to be in the future and how to best meet the future needs of its stakeholders. The vision statement incorporates a shared understanding of the nature and purpose of the organization and uses this understanding to move towards a greater purpose together. SWWRPC, in conjunction with UWEX-Iowa County, sponsored visioning sessions for each cluster in the autumn and winter of 2002-2003. The Village of Linden's planning commission utilized the visioning information from these sessions to create a formal vision statement. The vision statement for the Village of Linden is

In the Village of Linden we'd like to keep our small town atmosphere, friendly people, good schools, lack of crime, strong volunteer groups, clean environment, easy access to public officials, and a wonderful sense of pulling together when someone is in need. With the keeping of our rural setting and natural beauty, it makes a great place to raise a family. Our vision statement for the Village of Linden includes the following:

- *Moderate growth with a neighborhood concept*
- *With growth, another well will be needed*
- *Maintain services without raising taxes – fire department, first responders, police, garbage and recyclable pick-up*
- *Help establish and maintain local businesses to provide jobs for community members*
- *Establish a reading/lending center or public library*
- *Curb and gutter renovation and expansion*
- *Provide more sidewalks for pedestrian traffic*
- *Tree planting program for beautification*
- *Parks – maintain and expand the play areas and ball fields with added parking*
- *Maintain the community center – continue to provide night hour supervision and add classes for senior citizens (exercise, quilting, pottery, etc.)*
- *To keep our positive working relationships with the surrounding townships and communities*

VISIONING

In February 2003, the Village of Linden planning representatives were asked to identify issues, opportunities, strengths, and weaknesses specific to the Village of Linden. The following lists are based on the cluster visioning exercise, countywide survey, and local Plan Commission meetings. (See Appendix A-2 for the Southwest Cluster visioning results.)

Issues

No issues were identified by the Plan Commission.

Opportunities

- Friendly community with option for subdivision growth

Strengths

- We have a nice park to offer
- As a whole, the village has a small, friendly atmosphere
- Good school system
- Low crime rate
- Good fire protection
- Have a lot to offer – grocery store, gas station, cemetery, post office, community and municipal building, restaurants, some local job opportunities

Weaknesses

- Sidewalks but people do not want to keep up the maintenance of them

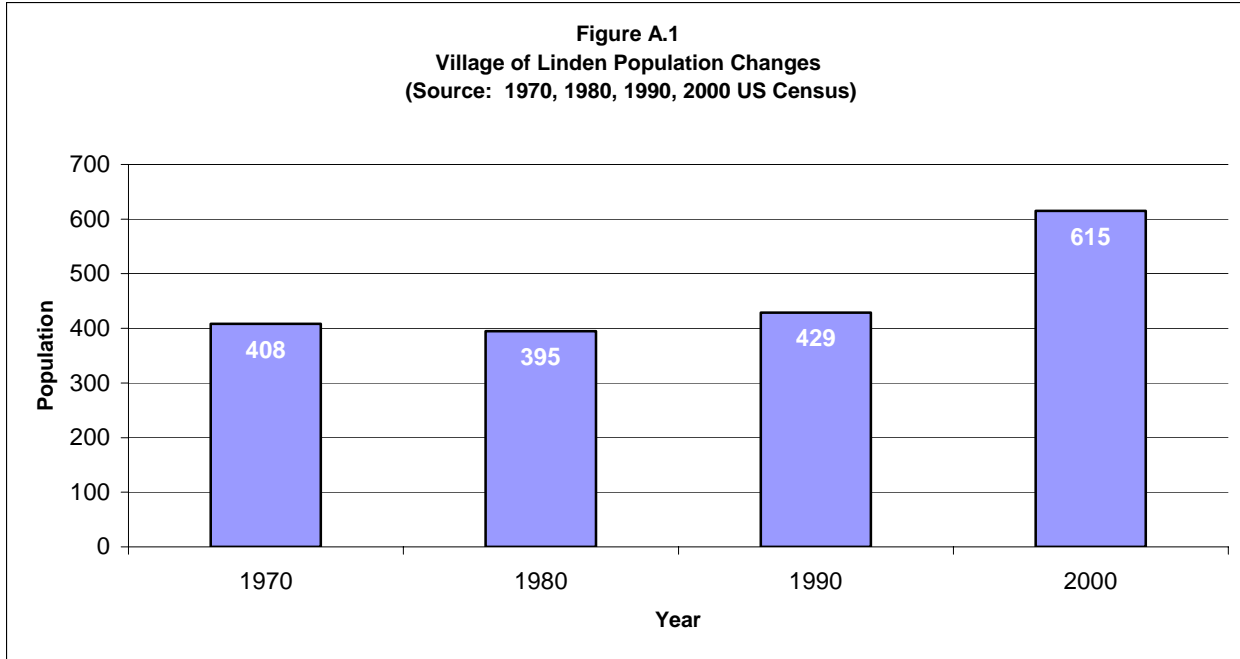
COMMUNITY PUBLIC PARTICIPATION PLAN

See Appendix A-3 for the jurisdiction's public participation plan.

DEMOGRAPHIC TRENDS

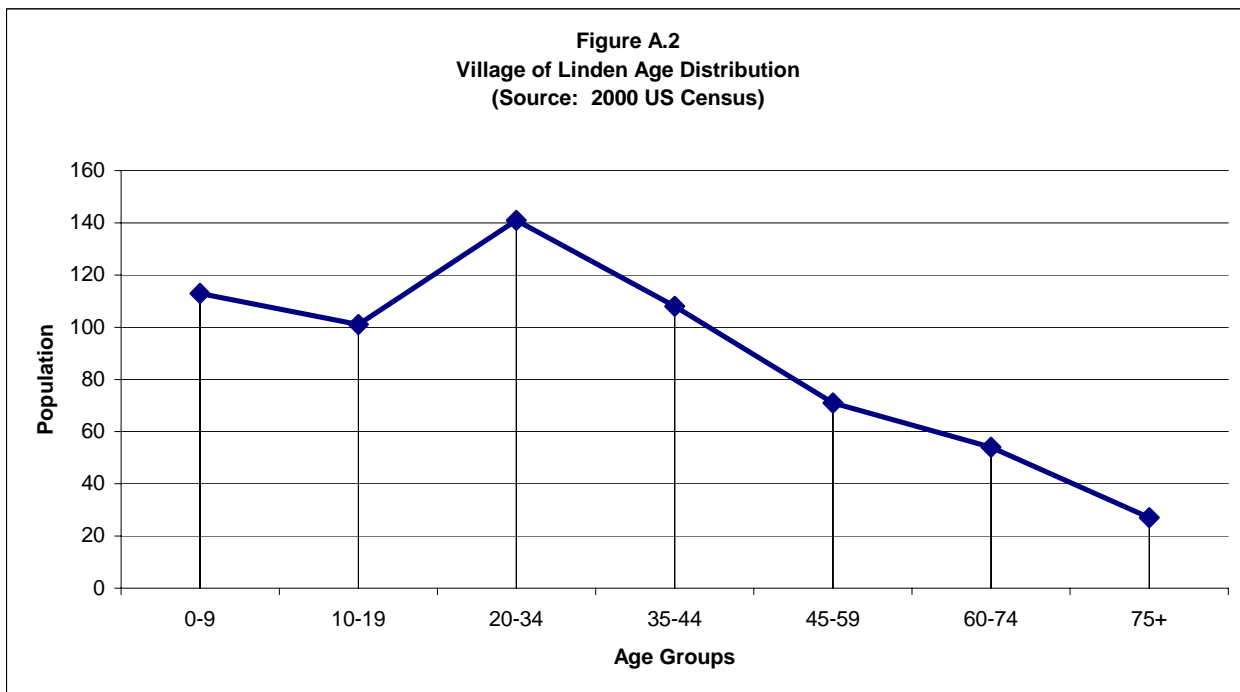
POPULATION CHANGES

The Village of Linden’s population has increased by 207 people over the past thirty years. Between 1970 and 1980 the village’s population dropped 3 percent, but between 1980 and 1990 it rose 9 percent. From 1990 to 2000 the village grew 43 percent.



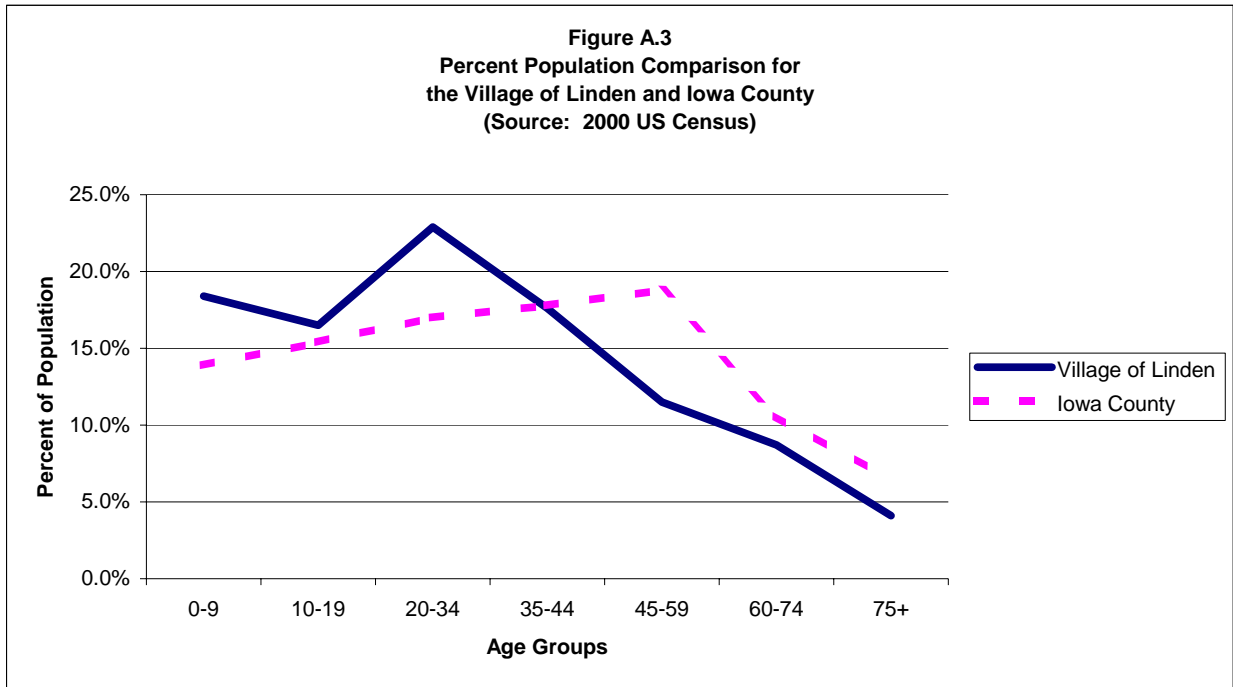
AGE DISTRIBUTION

Figure A.2 shows the age distribution of the Village of Linden residents, according to the 2000 US Census. Overall the population is well distributed among all the various age groups. The age group of 20 to 34 year olds has the highest concentration of the population in the village.



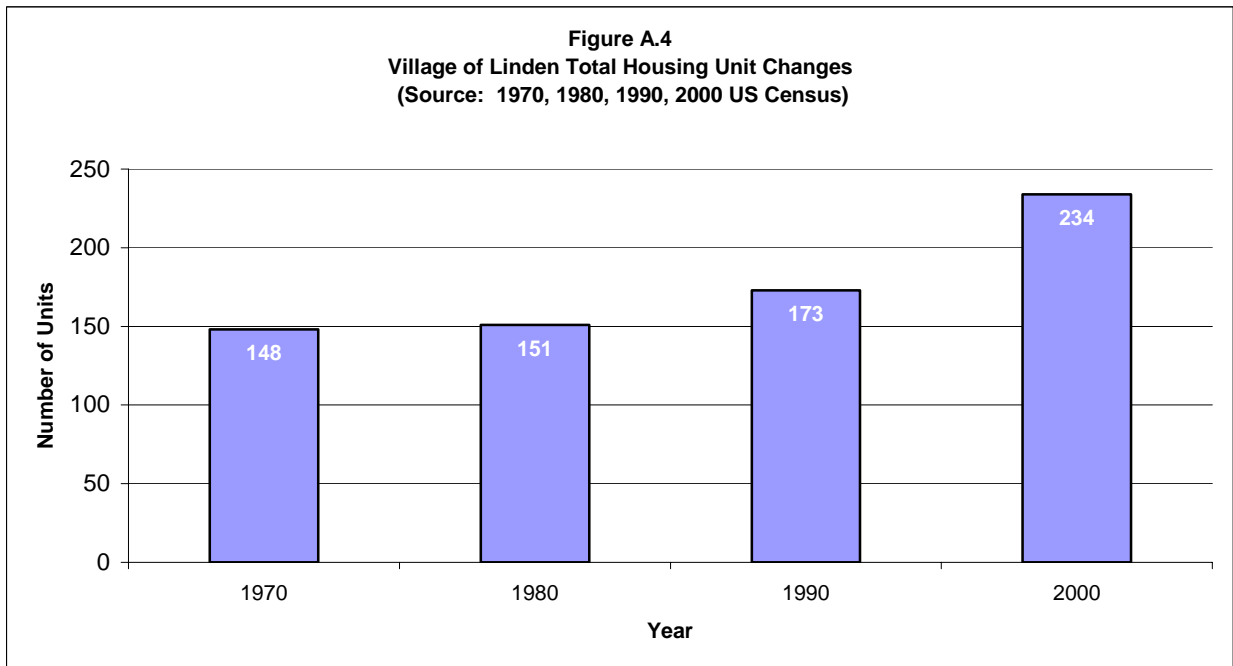
PERCENT POPULATION

Figure A.3 compares the village’s population to Iowa County as a whole. The breakdown of the village population is somewhat similar to the county population, although the village is much higher than the county in the 20 to 34 year age group.

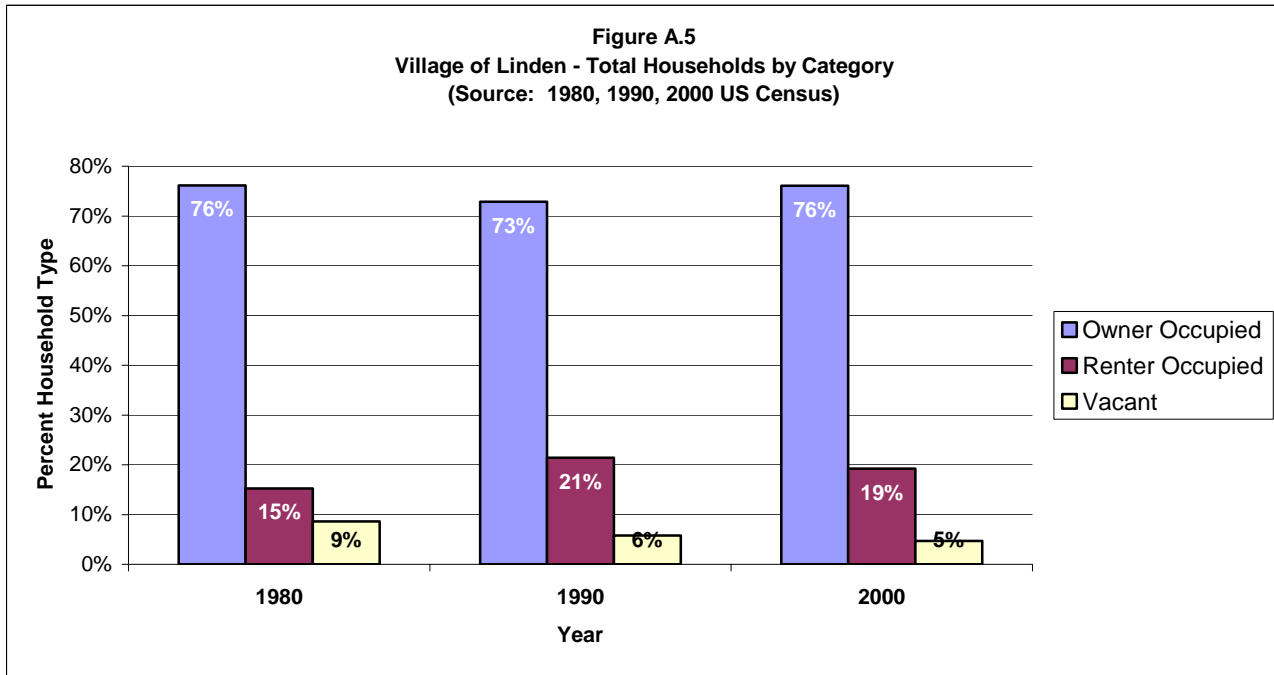


HOUSING TRENDS

Historically, the Village of Linden has seen an overall increase in the housing supply. “Total Housing Units” refers to the total number of units available for habitation: owned, rented, and vacant. As indicated by Figure A.4 the Village of Linden had an increase of eighty-three units between 1970 and 2000. For more housing information, refer Section B, Housing Element of this plan.



“Total Households” refers to occupied (owned and rented) housing units only. Figure A.5 shows of the 231 housing units in the village in 2000, 76 percent are owner occupied, 19 percent are renter occupied, and the remaining 5 percent are vacant. The average number of persons per household is 2.89 for owner occupied units, 2.22 for rental units.



EDUCATION LEVELS

An important factor tied to a community’s economic well-being, as well as its potential for economic growth, is the link between education levels of residents and employment opportunities. Table A.1 reflects the educational attainment of the village residents 25 years and older compared with Iowa County and the State of Wisconsin.

Table A.1: Education Attainment of Residents 25 Years and Older

| Education | Village of Linden | | Iowa County Percent | State of Wisconsin Percent |
|-------------------------------------|-------------------|---------|---------------------|----------------------------|
| | Number | Percent | | |
| < 9th grade | 18 | 5.3% | 4.2% | 5.4% |
| 9th-12th grade, no diploma | 42 | 12.5% | 7.4% | 9.6% |
| HS Grad (incl. Equivalency) | 169 | 50.1% | 41.8% | 34.6% |
| Some college, no degree | 74 | 22.0% | 19.9% | 20.6% |
| Associate Degree | 16 | 4.7% | 8.3% | 7.5% |
| Bachelors Degree | 15 | 4.5% | 13.2% | 15.3% |
| Graduate or Professional Degree | 3 | 0.9% | 5.3% | 7.2% |
| Total population 25 years and older | 337 | 100.0% | 100.0% | 100.0% |

Source: 2000 US Census

INCOME COMPARISONS

Table A.2 compares the income levels of the Village of Linden with those of Iowa County and the State of Wisconsin. Median household income is based on every unit of occupancy with one or more unrelated individuals. Median family income is based on units of occupancy with individuals related by blood (children, grandparents, etc) or law (marriage, adoption, etc). Per capita income is based on each individual wage earner.

Table A.2: Income Comparisons

| Income Type | Village of Linden | Iowa County | State of Wisconsin |
|-------------------------|-------------------|-------------|--------------------|
| Median household income | \$35,833 | \$42,518 | \$43,791 |
| Median family income | \$48,750 | \$49,972 | \$52,911 |
| Per capita income | \$16,331 | \$19,497 | \$21,271 |

Source: 2000 US Census

EMPLOYMENT CHARACTERISTICS

Table A.3 is reflective of the 2000 US Census for employed persons 16 years and over and their respective occupations in the Village of Linden, compared by percentage to Iowa County and the State of Wisconsin. By definition of the Census, occupation is referred to as the type of work a person does on the job. For more information, refer to Section F, Economic Development Element.

Table A.3: Employment Characteristics

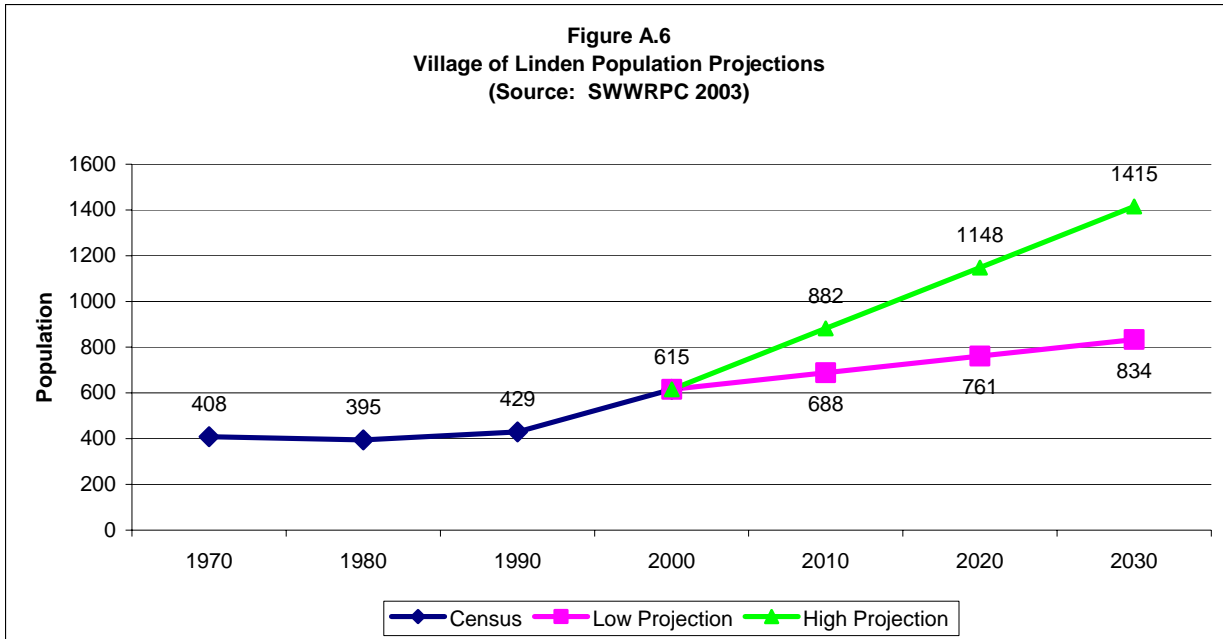
| Occupation | Village of Linden | | Iowa County Percent | State of Wisconsin Percent |
|---|-------------------|---------|---------------------|----------------------------|
| | Number | Percent | | |
| Management, professional and related | 57 | 20.6% | 30.9% | 31.3% |
| Services occupations | 50 | 18.1% | 12.8% | 14.0% |
| Sales and office occupations | 65 | 23.5% | 25.5% | 25.2% |
| Farming, fishing, and forestry occupations | 7 | 2.5% | 2.5% | 0.9% |
| Construction, extraction, and maintenance occupations | 50 | 18.1% | 10.9% | 8.7% |
| Production, transportation, and material moving occupations | 48 | 17.3% | 17.4% | 19.8% |
| Total employed civilian population 16 years and older | 277 | 100.0% | 100.0% | 100.0% |

Source: 2000 US Census

DEMOGRAPHIC PROJECTIONS

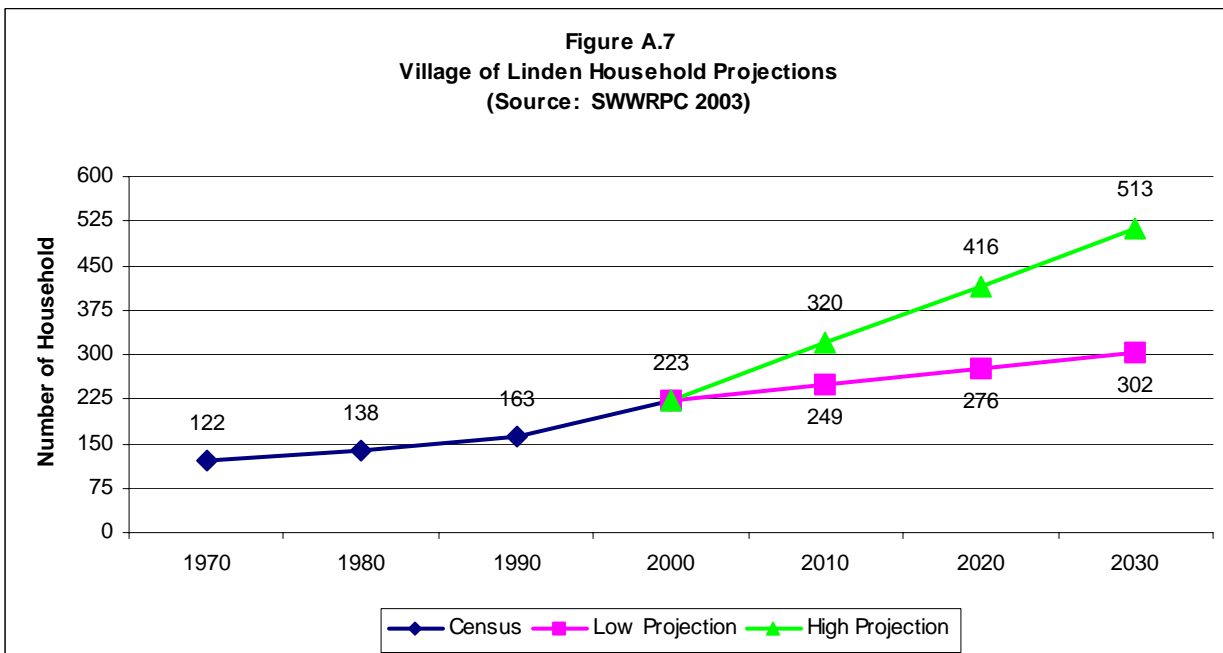
POPULATION

Preparing population projections is necessary to provide planners, developers, and others with expected increases or decreases in given base years. Reliable projections of population are needed for all kinds of planning or policy decisions whether involving the need for extending utilities, building a new highway, or starting a business. All these require some notion of probable demand for such facilities. Figure A.6 shows the past population totals, as well as projections to the year 2030. The figure gives both low and high projections, showing an overall population increase in the next 30 years.



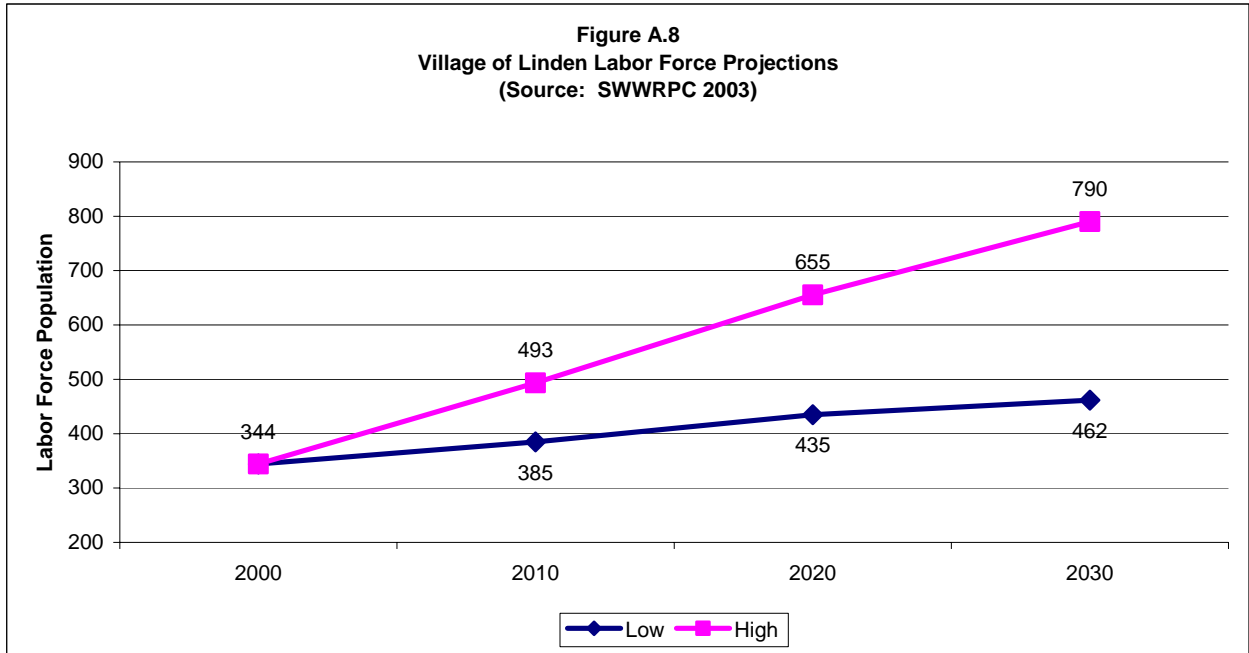
HOUSEHOLD

Figure A.7 shows household projections based on population projections and average household size from the 2000 US Census.



LABOR FORCE

Figure A.8 shows labor force projections for the Village of Linden. These available workers will not necessarily find employment in the village: many will work in nearby towns and cities. The figure merely indicates the available labor pool residing in the Village of Linden. For more information, go to Section F, Economic Development Element of this plan.



All of the projections presented in this section are based on past trends. The projections are intended as a guide. For instance, a sudden change, such as the creation of a large industry in an outlying area may dramatically affect these projections.