

Iowa County

AQUATIC OCCURRENCES

Animal

Eiktoe, *Alasmidonta marginata*, 1988
 Buckhorn, *Tritogonia verrucosa*, 1997
 Bullhead, *Plethobasus cyphus*, 1988
 Butterfly, *Ellipsaria lineolata*, 1997
 Bald Eagle, *Haliaeetus leucocephalus*, 2008
 Monkeyface, *Quadrula metanevra*, 1988
 Mud Darter, *Etheostoma asprigene*, 2008
 Mussel Bed, Mussel Bed, 1988
 Paddlefish, *Polyodon spathula*, 1992
 Shoal Chub, *Macrhybopsis aestivalis*, 1994
 Blue Sucker, *Cyctepus elongatus*, 1995
 Ebony Shell, *Fusconia ebena*, 1988
 Silver Chub, *Macrhybopsis storeriana*, 1993
 Weed Shiner, *Notropis texanus*, 1980
 Wood Turtle, *Glyptemys insculpta*, 1956
 American Eel, *Anguilla rostrata*, 1977
 Flat Floater, *Anodonta suborbiculata*, 1988
 Higgins' Eye, *Lampsilis higginsii*, 2003
 Least Darter, *Etheostoma microperca*, 2004
 Ozark Minnow, *Notropis nubilus*, 1927
 Pirate Perch, *Aphredoderus sayanus*, 2008
 Redside Dace, *Clinostomus elongatus*, 1972
 Round Pigtoe, *Pleurobema sintoxia*, 1997
 Black Buffalo, *Ictiobus niger*, 1962
 Crystal Darter, *Crystallaria asprella*, 2008
 Pugnose Minnow, *Opsopoeodus emiliae*, 2004
 Slender Madtom, *Noturus exilis*, 1976
 Lake Chubsucker, *Erimyzon sucetta*, 2008
 Plains Clubtail, *Gomphurus externus*, 1991
 Rock Pocketbook, *Arcidens corifragosus*, 1997
 Smoky Shadowfly, *Neurocordulia molestia*, 1993
 Greater Redhorse, *Moxostoma valenciennesi*, 1957
 American Bullfrog, *Lithobates catesbeianus*, 1994
 Blanding's Turtle, *Emydoidea blandingii*, 2008
 Salamander Mussel, *Simpsonia ambigua*, 1997
 Starhead Topminnow, *Fundulus dispar*, 2008
 Red-shouldered Hawk, *Buteo lineatus*, 2008
 Western Sand Darter, *Etheostoma clarum*, 1994
 Northern Cricket Frog, *Acris crepitans*, 2005
 Knobel's Riffle Beetle, *Stenelmis knobelii*,
 Russet-tipped Clubtail, *Stylurus plagiatus*, 1988
 A Predaceous Diving Beetle, *Lioporeus triangularis*, 1985
 Wallace's Deepwater Mayfly, *Spinadix simplex*, 1976
 Yellow & Slough Sandshells, *Lampsilis teres*, 1988

Plants

Bog Fern, *Thelypteris simulata*, 2000
 Sycamore, *Platanus occidentalis*, 1985
 Glade Mallow, *Napaea dioica*, 2005
 Whip Nuts, *Scieria triglomerata*, 1974
 Pink Milkwort, *Polygala incarnata*, 1929
 Grassleaf Rush, *Juncus marginatus*, 1922
 Yellow Screwstem, *Bartonia virginica*, 1924
 Crossleaf Milkwort, *Polygala cruciata*, 1927
 Schweinitz's Sedge, *Carex schweinitzii*, 1965
 Small Forget-me-not, *Mycositis laxa*, 2008
 Smooth-sheath Sedge, *Carex laevigata*, 2005
 Engelmann Spike-rush, *Eleocharis engelmannii*, 1922
 Showy Lady's-slipper, *Cypripedium reginae*, 1950
 Virginia Meadow-beauty, *Rhexia virginica*, 1967
 Slim-stem Small-reedgrass, *Calamagrostis stricta*, 1937
 Small White Lady's-slipper, *Cypripedium candidum*, 1999
 Sweet-scented Indian-plantain, *Cacalia suaveolens*, 2008

Natural Communities

Shrub-carr, Shrub-carr, 1976
 Lake-Oxbow, Lake-oxbow, 1976
 Emergent Marsh, Emergent marsh, 1976
 Ephemeral Pond, Ephemeral pond, 1976
 Floodplain Forest, Floodplain forest, 1988
 Wet-mesic Prairie, Wet-mesic prairie, 1987
 Southern Sedge Meadow, Southern sedge meadow, 2003
 Stream-Fast, Hard, Cold, Stream-fast, hard, cold, 1976

TERRESTRIAL OCCURRENCES

Animal

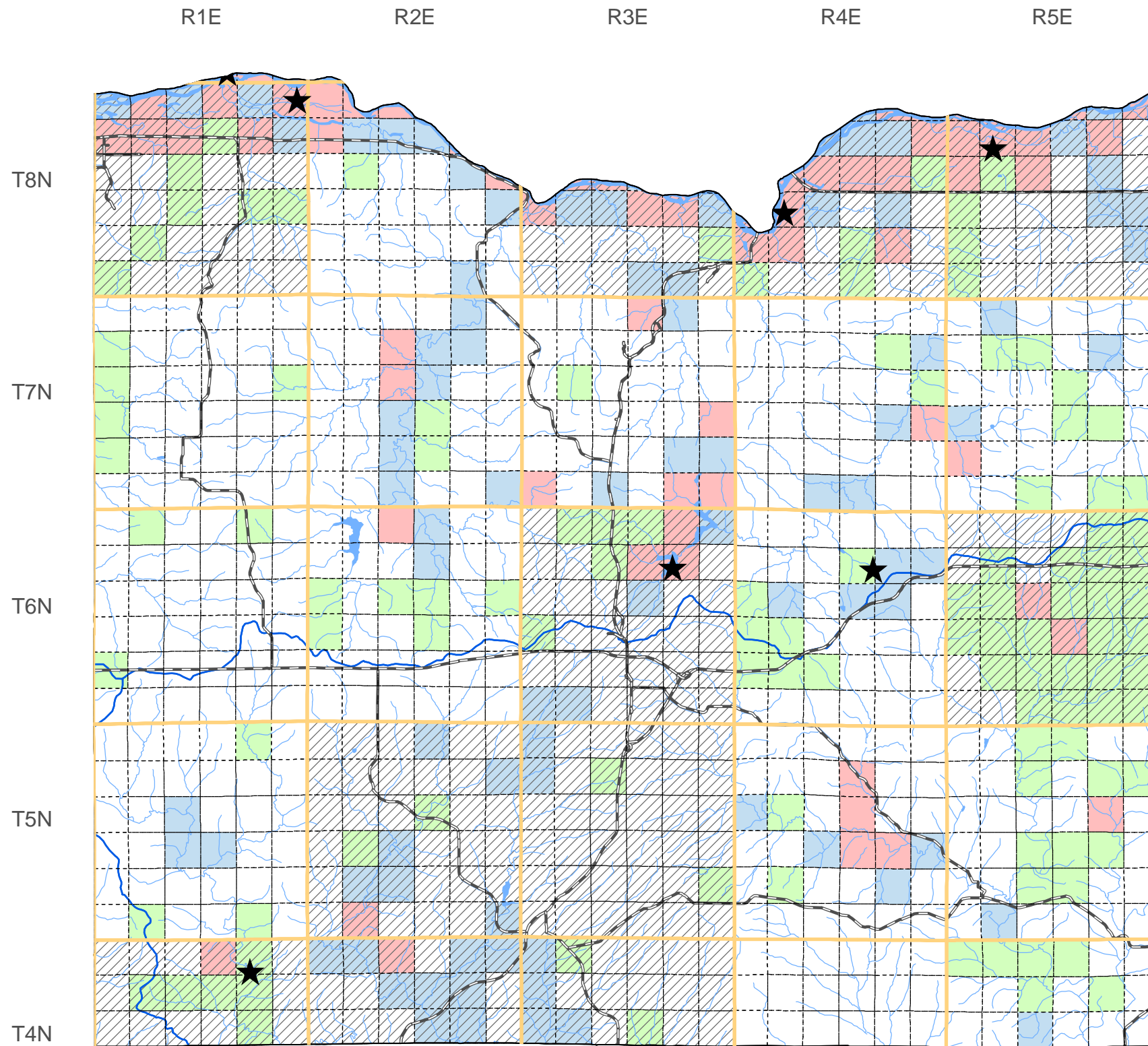
Barn Owl, *Tyto alba*, 1982
 Dickcissel, *Spiza americana*, 2005
 Gophersnake, *Pituophis catenifer*, 2004
 A Leafhopper, *Amphispiza vanduzeei*, 2008
 Bell's Vireo, *Vireo bellii*, 2007
 Gray Ratsnake, *Partherophis spilioides*, 2007
 Hooded Warbler, *Wilsonia citrina*, 2006
 Bat Hibernaculum, Bat Hibernaculum, 1997
 Cherrystone Drop, *Hendersonia occulta*, 2006
 Kentucky Warbler, *Oporornis formosus*, 2006
 Regal Tittillary, *Speyeria idalia*, 2008
 Upland Sandpiper, *Bartramia longicauda*, 2005
 Henslow's Sparrow, *Ammodramus henslowii*, 2007
 Herp Hibernaculum, Herp Hibernaculum, 2008
 Leonard's Skipper, *Hesperia leonardus*, 1996
 Loggerhead Shrike, *Lanius ludovicianus*, 1992
 Ornate Box Turtle, *Terrapene ornata*, 2007
 Acadian Flycatcher, *Empidonax virescens*, 2006
 Prairie Leafhopper, *Polyamia dilata*, 1998
 Timber Rattlesnake, *Crotalus horridus*, 2008
 Western Meadowlark, *Sturnella neglecta*, 2002
 Eastern Pipitrelle, *Pipitrellus subflavus*, 1997
 Gorgone Checker Spot, *Chlosyne gorgone*, 1989
 North American Racer, *Coluber constrictor*, 2007
 Yellow-billed Cuckoo, *Coccyzus americanus*, 2008
 Western Harvest Mouse, *Reithrodontomys megalotis*, 1996
 Wild Indigo Dusky Wing, *Erynnis baptisiae*, 1989
 Club-homed Grasshopper, *Aeropedellus clavatus*, 2004
 Northern Long-eared Bat, *Myotis septentrionalis*, 1997
 Red-tailed Prairie Leafhopper, *Aftelia rubranura*, 2006

Plants

Twingleaf, *Jeffersonia diphylla*, 1991
 Fire Pink, *Silene virginica*, 2003
 Beak Grass, *Diarrhena obovata*, 2001
 Buttonweed, *Diodia teres* var. *teres*, 2008
 Marbleseed, *Onosmodium molle*, 2006
 Hooker Orchis, *Platanthera hookeri*, 1938
 Snowy Campion, *Silene nivea*, 1994
 Wild Hyacinth, *Camassia scilloides*, 1995
 Cluster Fescue, *Festuca paradoxa*, 1941
 Hill's Thistle, *Cirsium hillii*, 2006
 Maryland Senna, *Senna marilandica*, 1883
 Prairie Turnip, *Pediomelum esculentum*, 2004
 Upland Boneset, *Eupatorium sessilifolium* var. *brittonianum*, 2001
 Yellow Gentian, *Gentiana alba*, 2001
 Nodding Pogonia, *Triphora trianthophora*, 1973
 Prairie Parsley, *Polytaenia nuttallii*, 1927
 Prairie Ragwort, *Senecio plattensis*, 2008
 Purple Clematis, *Clematis occidentalis*, 1901
 Purple Milkweed, *Asclepias purpurascens*, 2001
 Woolly Milkweed, *Asclepias lanuginosa*, 1999
 Lobed Spleenwort, *Asplenium pinnatifidum*, 1992
 Prairie Dunewort, *Botrychium campestre*, 2006
 Richardson Sedge, *Carex richardsonii*, 2004
 American Gromwell, *Lithospermum latifolium*, 2003
 Autumn Coral-root, *Corallorhiza odontorhiza*, 1947
 Pale Green Orchid, *Platanthera flava* var. *herbiola*, 2000
 American Fever-few, *Parthenium integrifolium*, 2001
 Roundstem Foxglove, *Agalinis gattingeri*, 1974
 Short's Rock-ress, *Arabis shortii*, 2008
 Violet Bush-clover, *Lespedeza violacea*, 1961
 Wilcox Panic Grass, *Panicum wilcoxianum*, 1940
 Woodland Bluegrass, *Poa sylvestris*, 2001
 Clustered Broomrape, *Orobanche fasciculata*, 1860
 Pale False Foxglove, *Agalinis skinneriana*, 2001
 Prairie Bush-clover, *Lespedeza leptostachya*, 2008
 Prairie Fame-flower, *Talinum rugospermum*, 2008
 Great Indian-plantain, *Cacalia muehlenbergii*, 2004
 Heart-leaved Skullcap, *Scutellaria ovata*, 2001
 Clustered Poppy-mallow, *Callirhoe triangulata*, 2005
 One-flowered Broomrape, *Orobanche uniflora*, 1999
 Prairie False-dandelion, *Microseris cuspidata*, 1942
 Prairie Indian Plantain, *Cacalia tuberosa*, 2004
 Yellow Evening Primrose, *Calylophus serrulatus*, 1968
 Nodding Rattlesnake-root, *Prenanthes coccinea*, 2008
 Three-flower Melic Grass, *Melica nitens*, 1959
 Small-flowered Woolly Bean, *Strophostyles leiosperma*, 1971

Natural Communities

Dry Cliff, Dry cliff, 1976
 Dry Prairie, Dry prairie, 2001
 Moist Cliff, Moist cliff, 1976
 Oak Opening, Oak opening, 1986
 Pine Relict, Pine relict, 1985
 Pine Barrens, Pine barrens, 1976
 Sand Barrens, Sand barrens, 2002
 Sand Prairie, Sand prairie, 1997
 Mesic Prairie, Mesic prairie, 1996
 Hemlock Relict, Hemlock relict, 2000
 Dry-mesic Prairie, Dry-mesic prairie, 1987
 Southern Mesic Forest, Southern mesic forest, 1976
 Southern Dry-mesic Forest, Southern dry-mesic forest, 1992



SPECIES and/or
NATURAL COMMUNITY



Aquatic



Terrestrial



Both



Township
Occurrences



Watershed
Boundaries



State
Natural Area

MAP 3.2.4 THREATENED AND ENDANGERED SPECIES



This map represents the known occurrences of rare species and natural communities that have been recorded in the Wisconsin Natural Heritage Inventory (NHI). Colored sections indicate the presence of one or more occurrences within that section. Hatched townships indicate one or more occurrences reported only at the township level. The date following the names above notes the most recent year the occurrence was recorded in the county.

Map generated using NHI data from: 04/08/2009
 Copyright 2003, WDNR-Bureau of Endangered Resources
 This map may not be reproduced without prior written permission.



ENDANGERED
RESOURCES