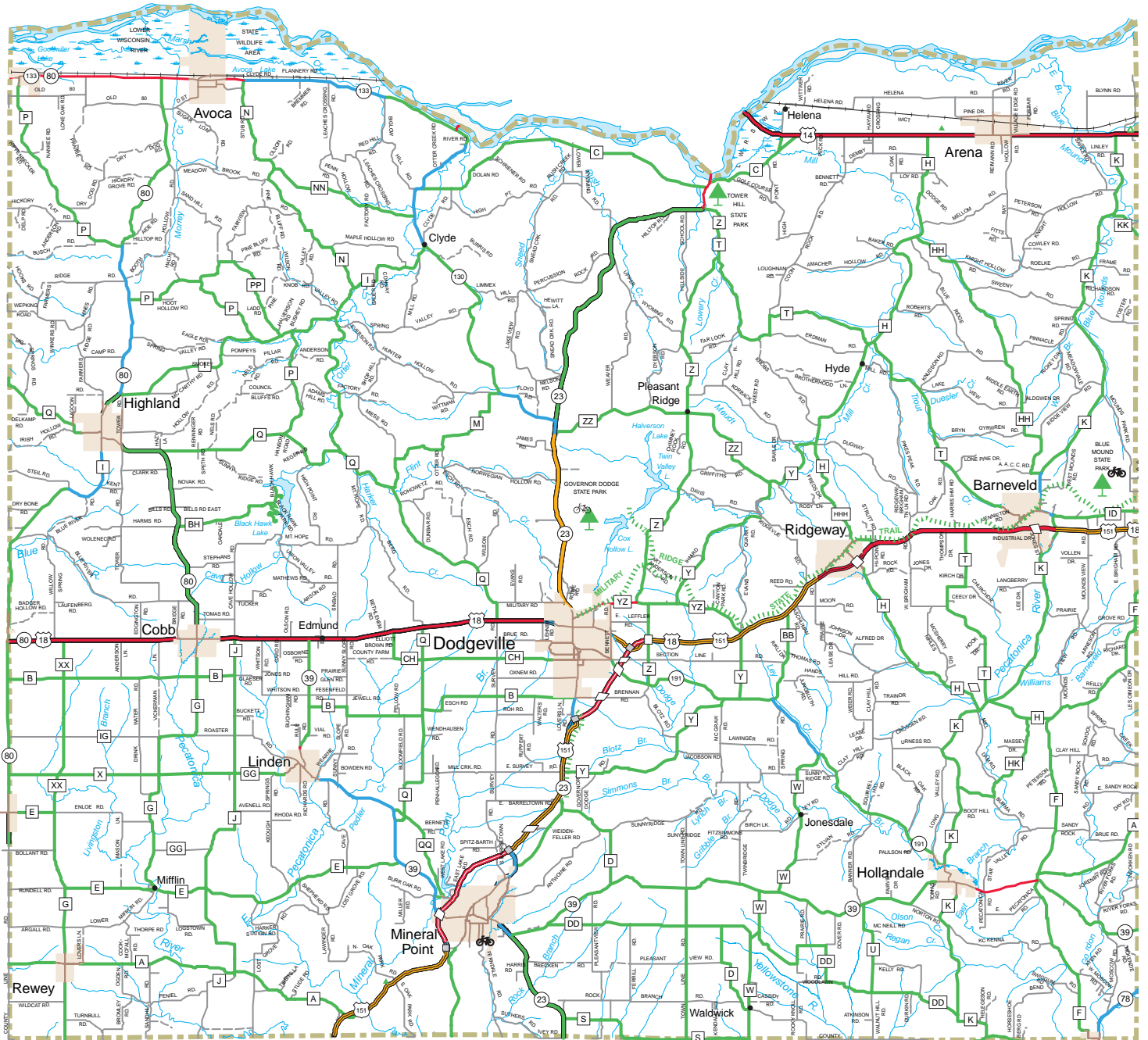


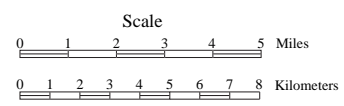
IOWA COUNTY BICYCLING CONDITIONS MAP 5.2



- Interstate
- U.S. Highway
- State Highway
- County Highway
- State Park
- Public Campground
- County Park with Facilities
- County Park without Facilities
- Wayside
- Mountain Bike Trail
- Highway Interchange
- Bridge
- Town Roads
- Best Conditions for Bicycling
- Moderate Conditions for Bicycling

- | | |
|---------|-------|
| Unpaved | Paved |
| | |
| | |

- Higher Volume, Wider Paved Shoulders
- High Volume, Undesirable Conditions
- Bicyclists Prohibited
- Bicycle Touring Trails
- Urban Escape Routes
- Major Urban Streets
- Local Road with Higher Traffic Volume



Note: paved shoulder information is provided for state highways only.

See full legend for complete descriptions of road classifications.